



# Monroe County Missouri Land iAuction - Gough Farm

**T R O P H Y**  
PROPERTIES AND AUCTION  
LAND | RECREATIONAL | RESIDENTIAL

www.TrophyPA.com • (855) 573-5263 • leads@trophy.com



**PROPERTY ADDRESS:**  
27859 Monroe Road 239  
Shelbina, MO 63468

**ACRES:** 70.5  
**COUNTY:** Monroe

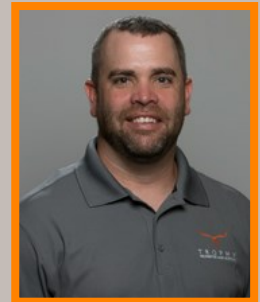
## AUCTION DETAILS:

**Property Preview Saturday, April 8th 10AM to Noon.**

**Bidding Ends Thursday, April 20th at 10AM.**

This 70.5 surveyed acre property in Monroe County near the Shelby County line is an ideal spot for any outdoorsman or nature lover. The land is gently rolling and covered in a mix of hardwoods and softwood trees. There are several ponds located on the property, along with a few small creeks making this a great spot for fishing and other recreational activities. A 40' x 50' hunting cabin/machine shop was built in 2022. The building comes equipped with a kitchen, bathroom, washer and dryer hookups, and a lofted sleeping area. Property is located approximately 5 miles south of Shelbina and 12 miles north of Paris just west of highway 15.

The rolling terrain and wooded landscape offer plenty of opportunities for hunting, hiking, camping, and more. This property is perfect for anyone looking to escape the hustle and bustle of city life and enjoy the beauty and peace of nature.



## PRESENTED BY:

**JASON CHINN**  
Land & Residential Specialist  
M: (573) 514-9368  
P: (855) 573-5263 x708  
E: Jchinn@trophy.com

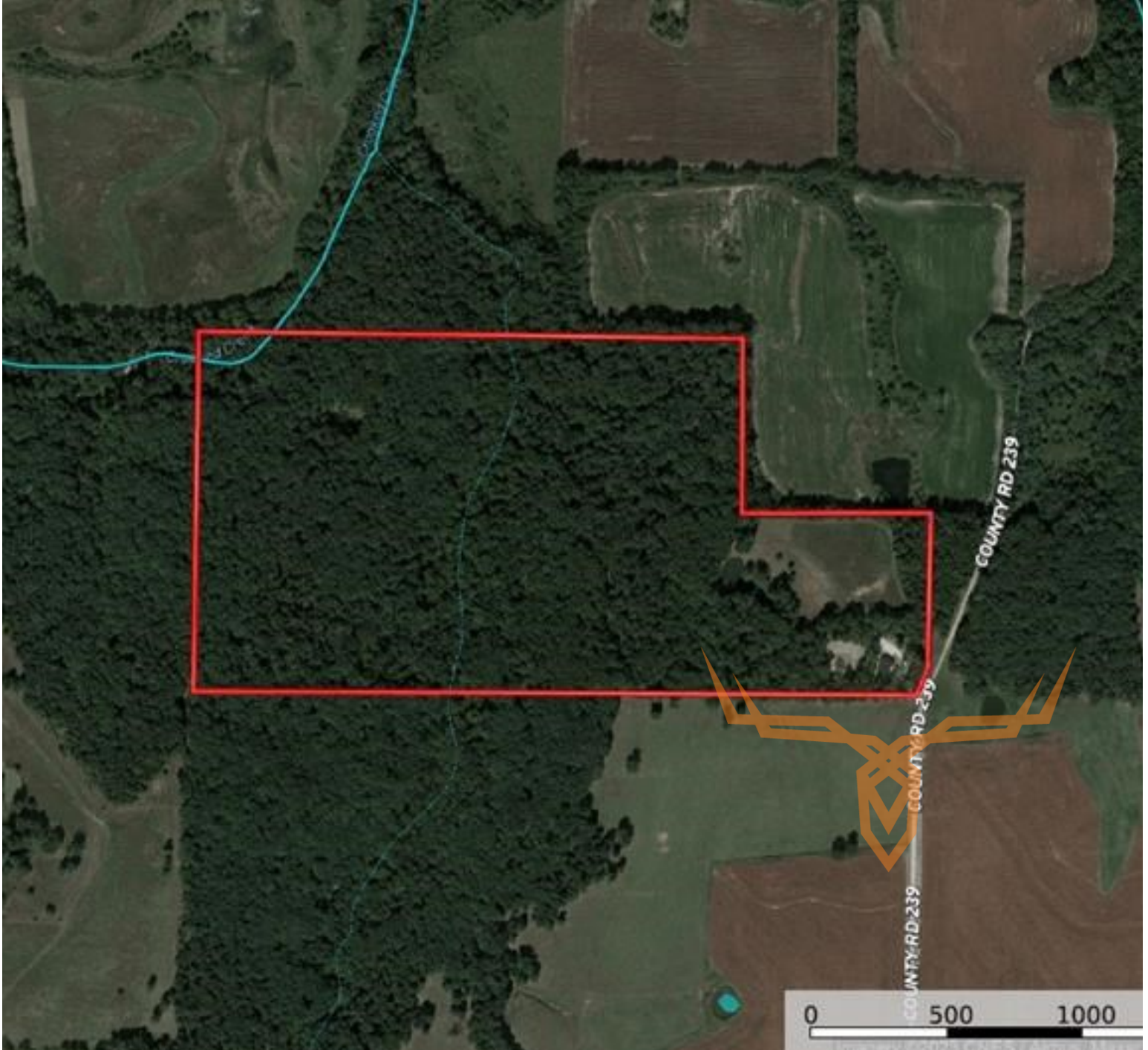
**Trophy Properties and Auction**  
15480 Clayton Road  
Suite 101  
Ballwin, MO 63011  
www.Trophy.com  
leads@trophy.com



# Monroe County Missouri Land iAuction - Gough Farm

**T R O P H Y**  
PROPERTIES AND AUCTION  
LAND | RECREATIONAL | RESIDENTIAL

www.TrophyPA.com • (855) 573-5263 • leads@trophyPA.com



The information is believed to be accurate; however, no liability for its accuracy, errors or omissions is assumed. All lines are drawn on maps, photographs, etc. are approximate. Buyers should verify the information to their satisfaction. There are no expressed or implied warranties pertaining to this property. Both real estate (including all improvements, if any) is being sold As Is, Where Is with NO warranties expressed or implied. Please make all inspections and have financing arranged prior to the end of bidding.