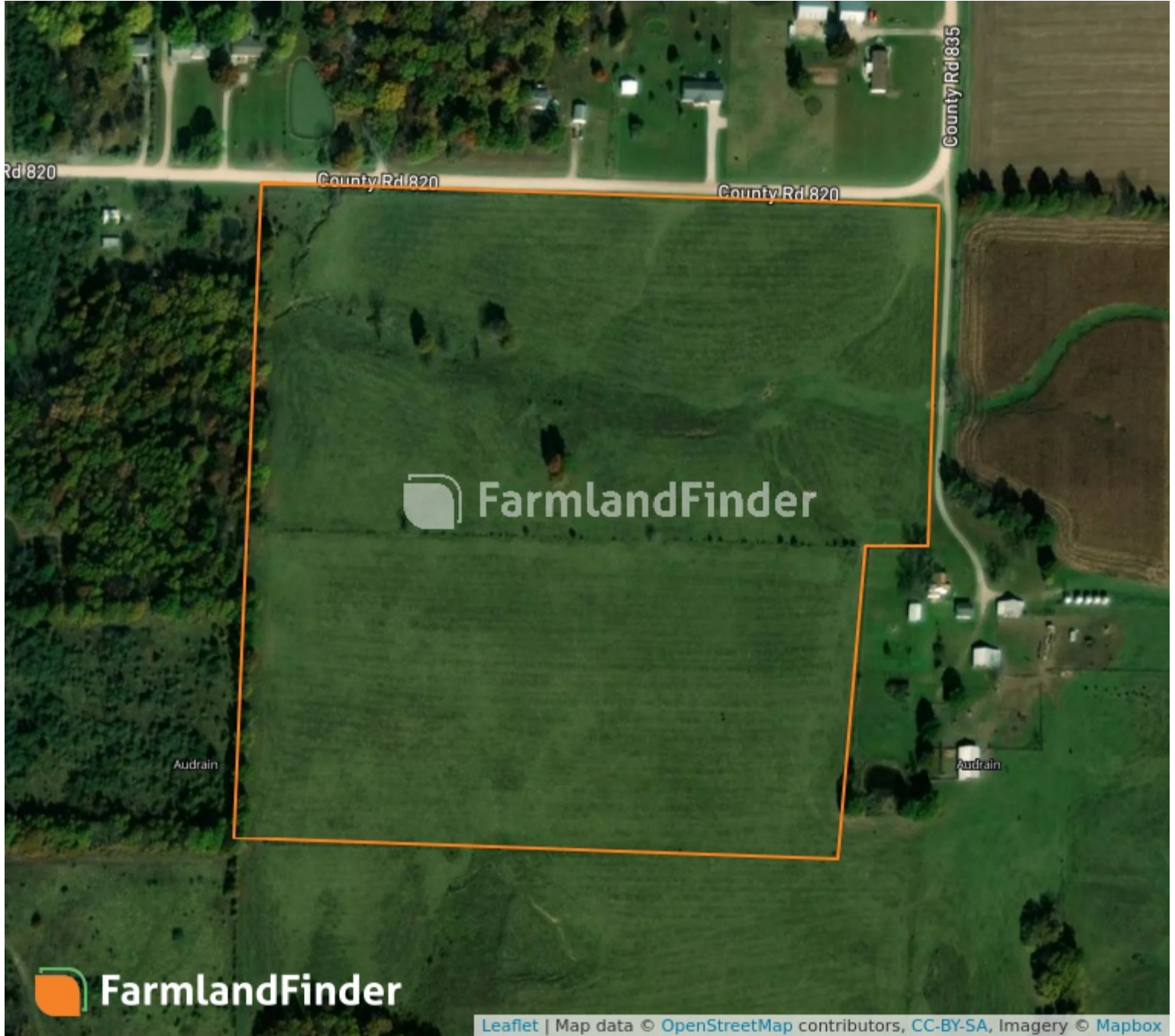


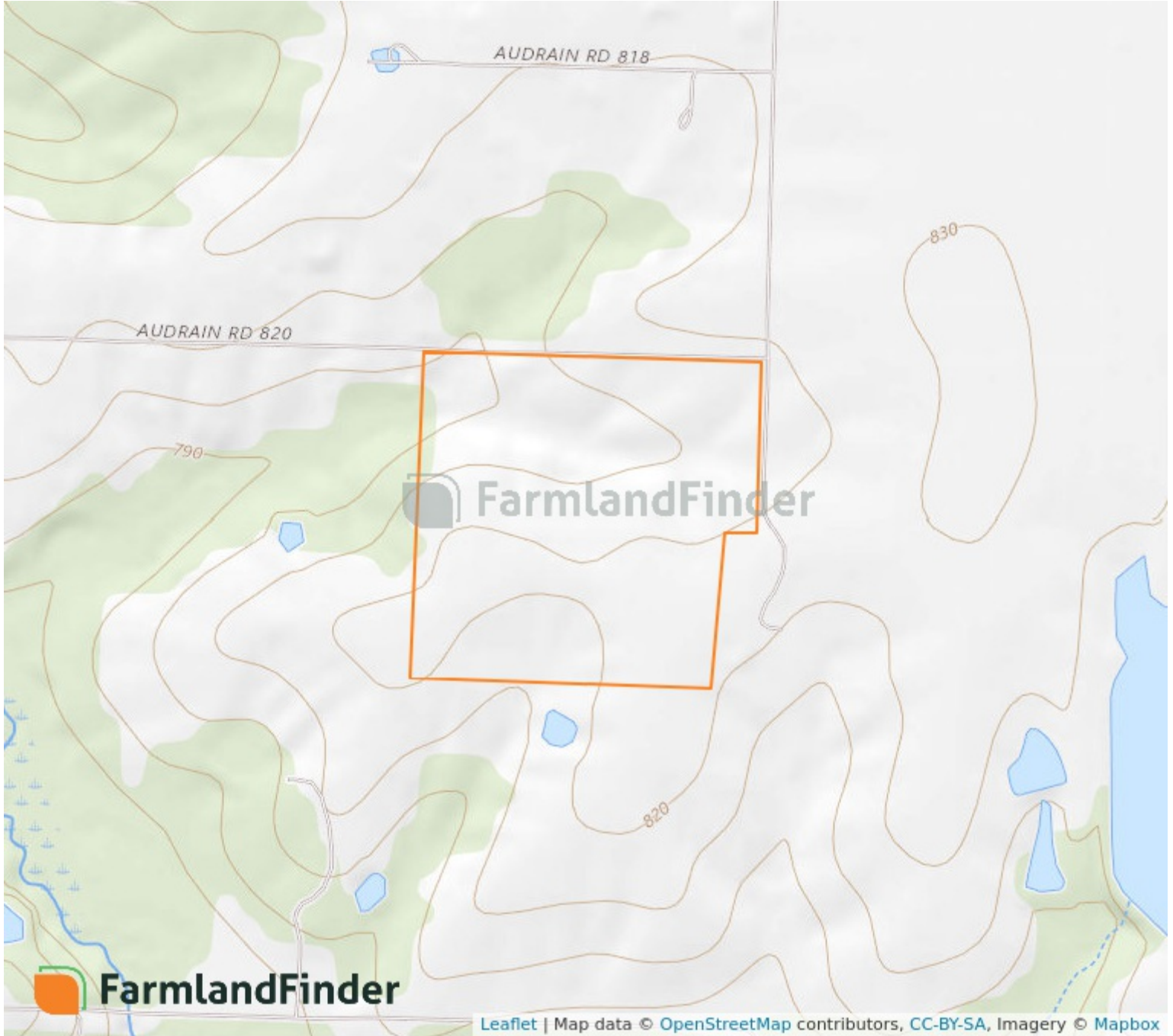
Aerial Map



9 - 50N - 8W
Audrain County, Missouri

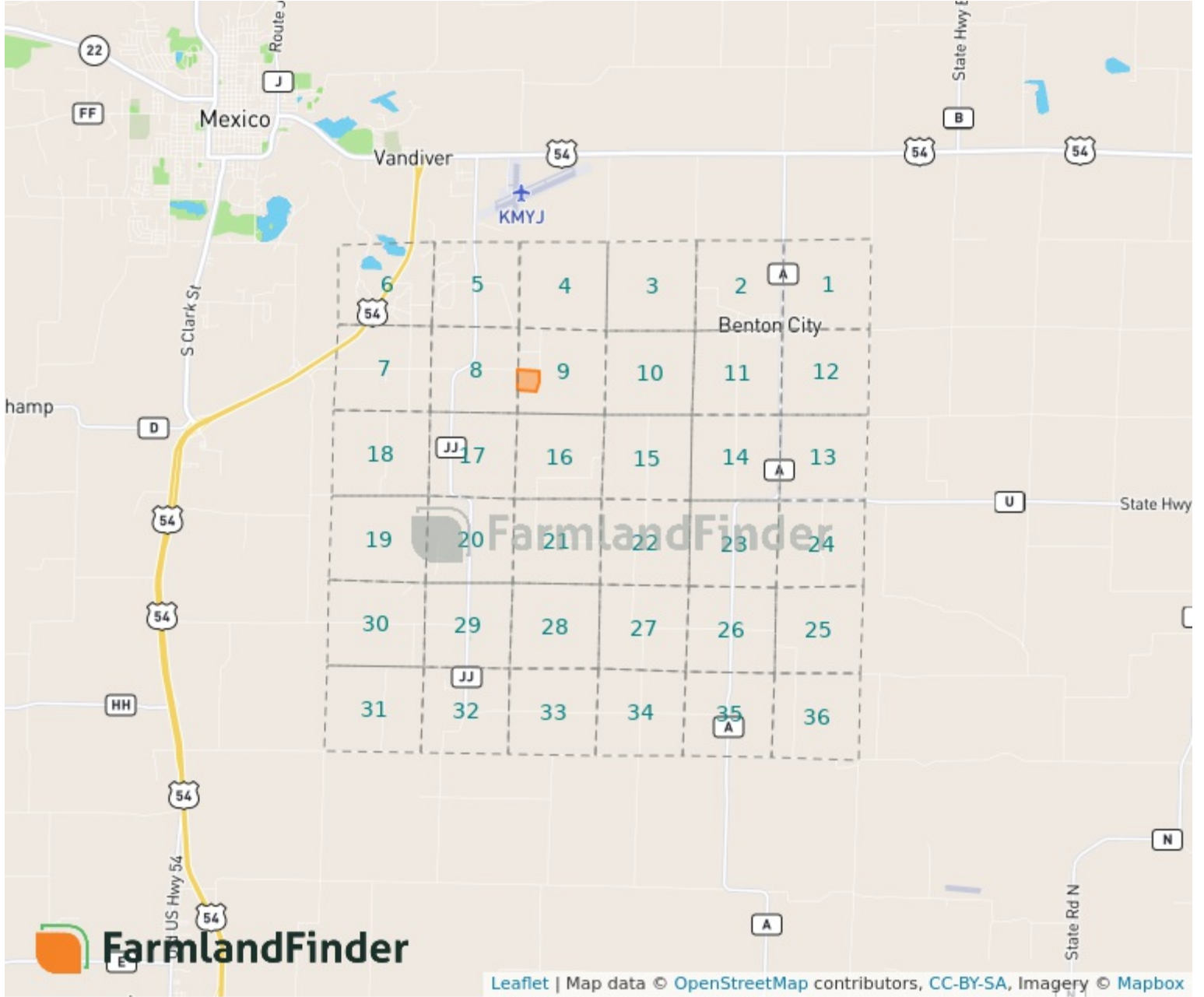
39°7'29.98" N, 91°49'5.673" W

Topography Map



9 - 50N - 8W
Audrain County, Missouri
39°7'29.98" N, 91°49'5.673" W

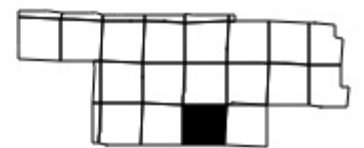
Plat Map



9 - 50N - 8W

Audrain County, Missouri

39°7'29.98" N, 91°49'5.673" W



Soil Map – Total Acres

Source: NRCS SSURGO



Code	Description	Acres	% of Field	Soil Class	NCCPI
50001	Armstrong loam, 5 to 9% slopes	26.25	68.1%	3	51.09
60006	Marion silt loam, 2 to 5% slopes	9.52	24.7%	3	37.89
50008	Keswick silt loam, 5 to 9% slopes	2.79	7.2%	3	40.59
50059	Mexico silt loam, 1 to 4% slopes	0	0%	3	48.53
		38.56			47.07