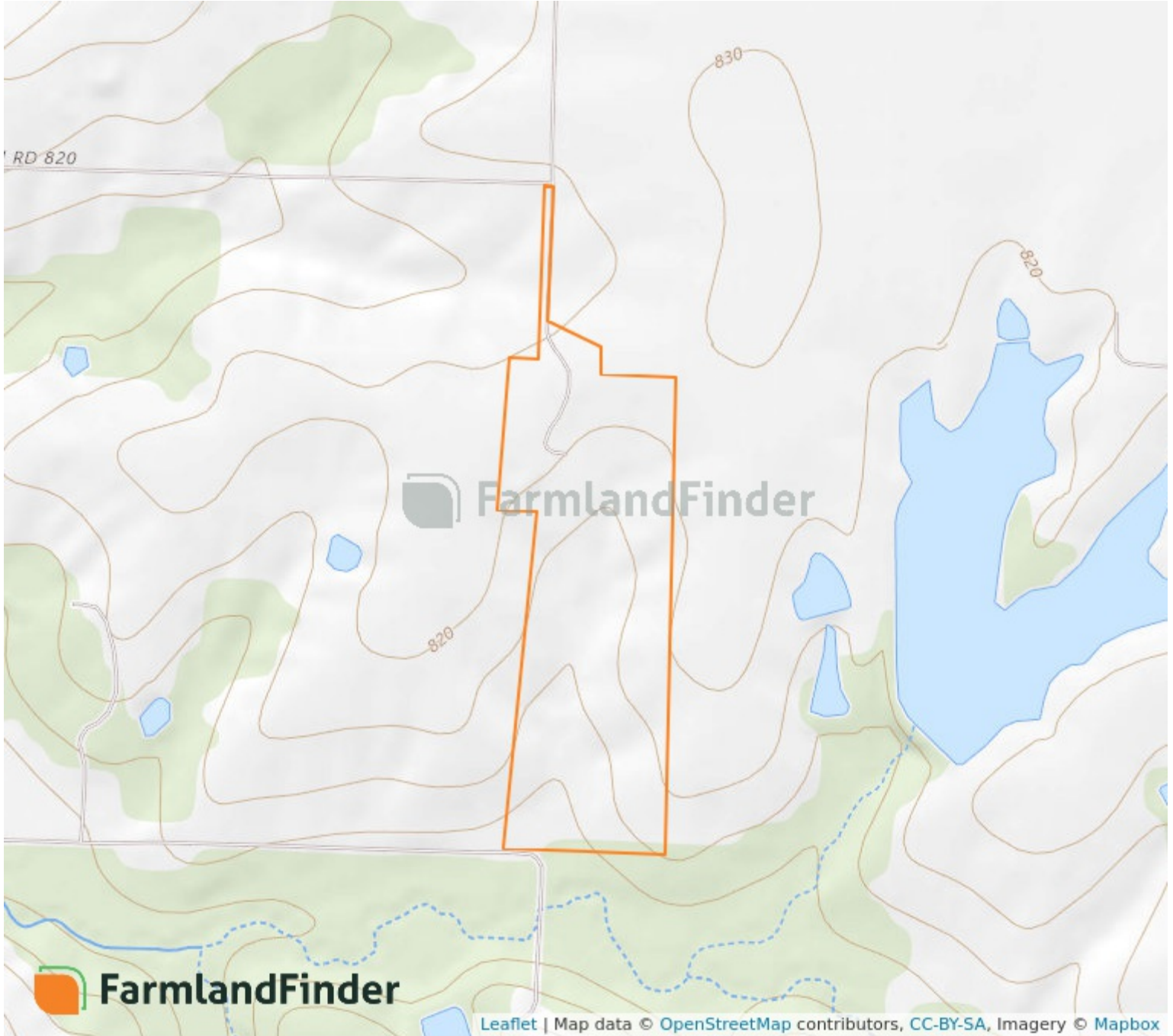


Aerial Map



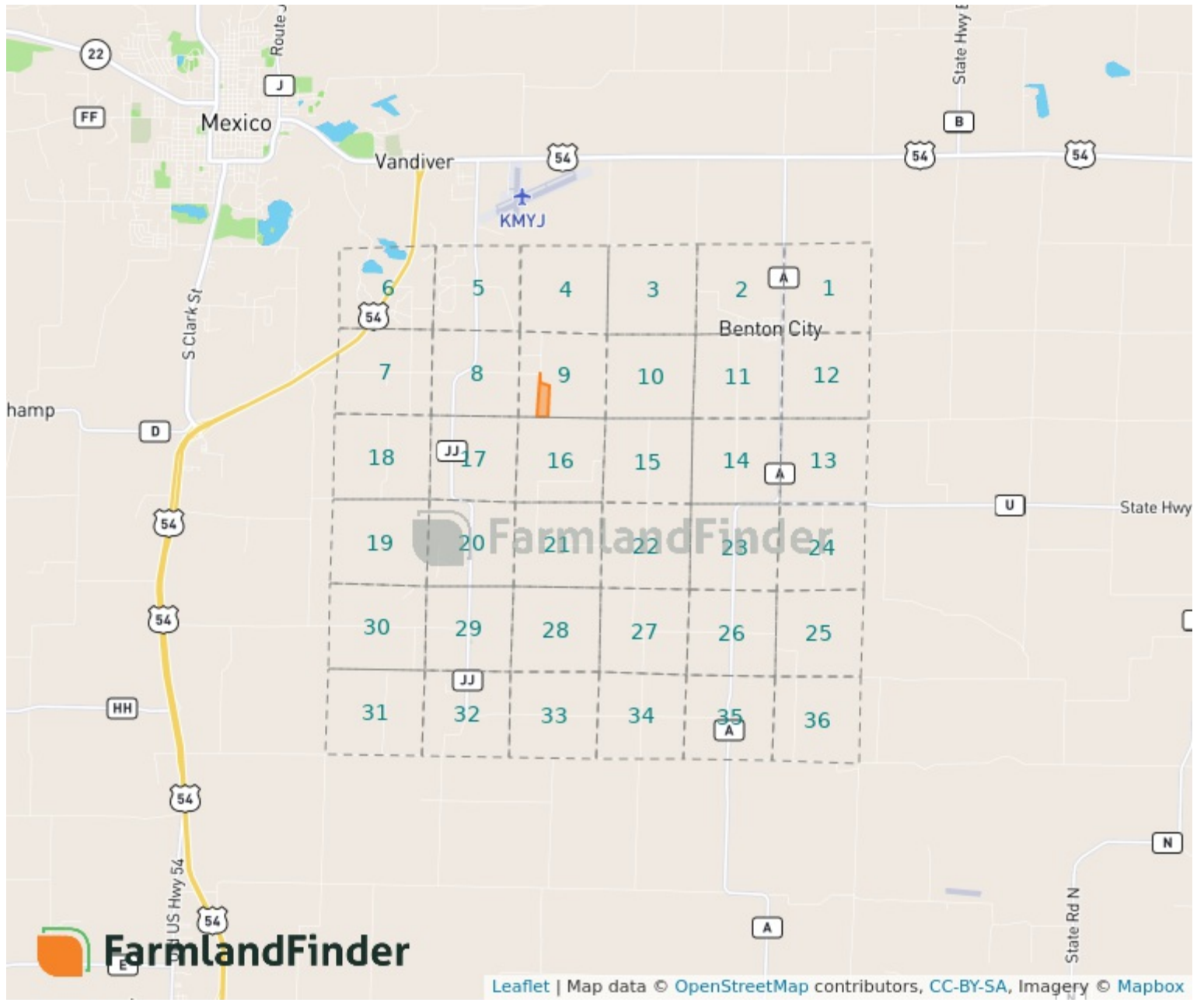
9 - 50N - 8W
Audrain County, Missouri
39°7'23.09" N, 91°48'54.74" W

Topography Map

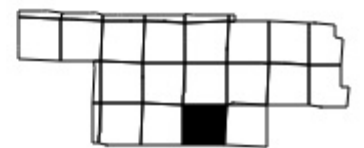


9 - 50N - 8W
Audrain County, Missouri
39°7'23.09" N, 91°48'54.74" W

Plat Map

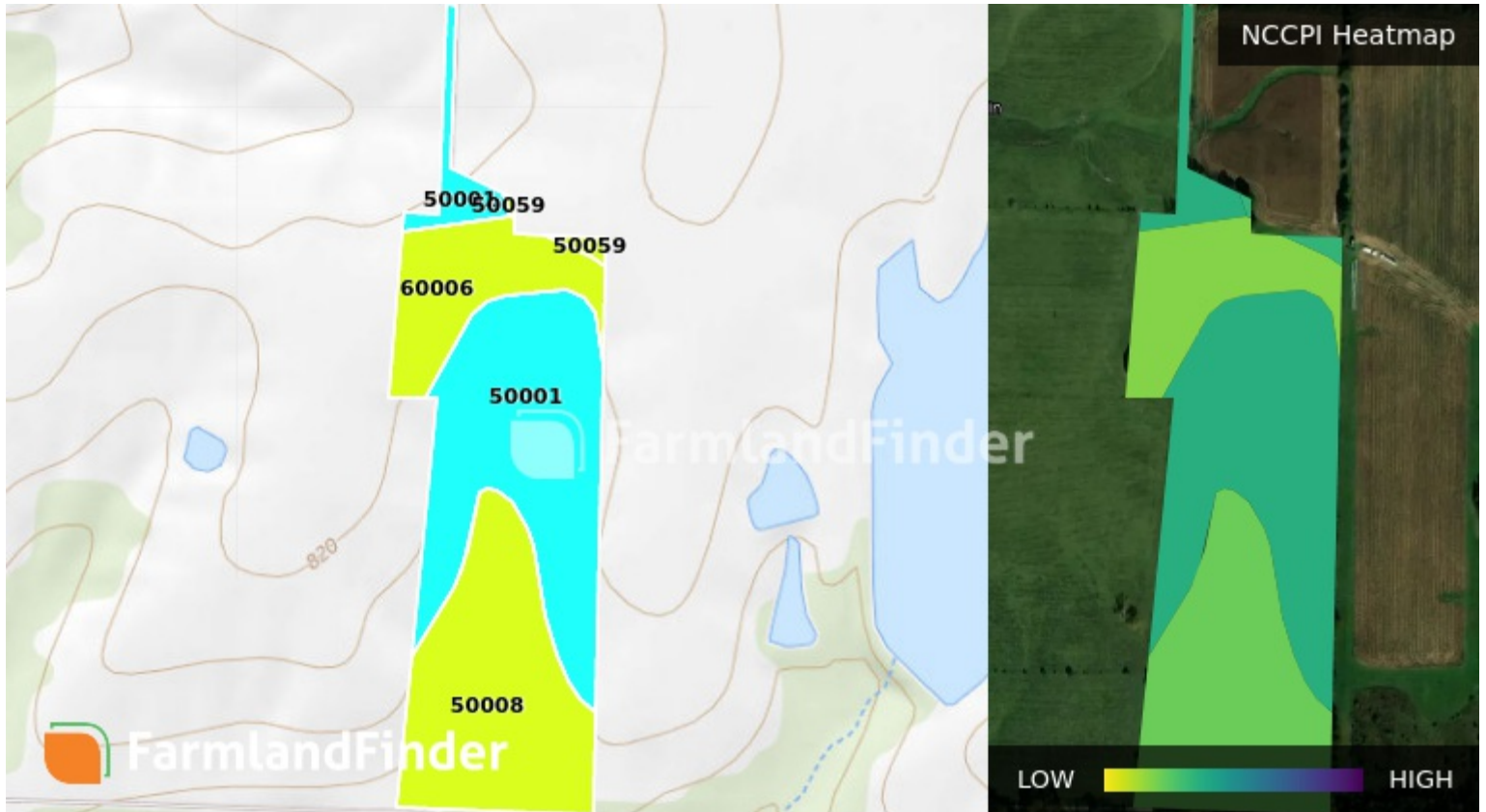


9 - 50N - 8W
 Audrain County, Missouri
 39°7'23.09" N, 91°48'54.74" W



Soil Map – Total Acres

Source: NRCS SSURGO



Code	Description	Acres	% of Field	Soil Class	NCCPI
50001	Armstrong loam, 5 to 9% slopes	13.12	45.9%	3	51.09
50008	Keswick silt loam, 5 to 9% slopes	10.39	36.4%	3	40.59
60006	Marion silt loam, 2 to 5% slopes	4.82	16.9%	3	37.89
50059	Mexico silt loam, 1 to 4% slopes	0.25	0.9%	3	48.53
		28.58			45.07