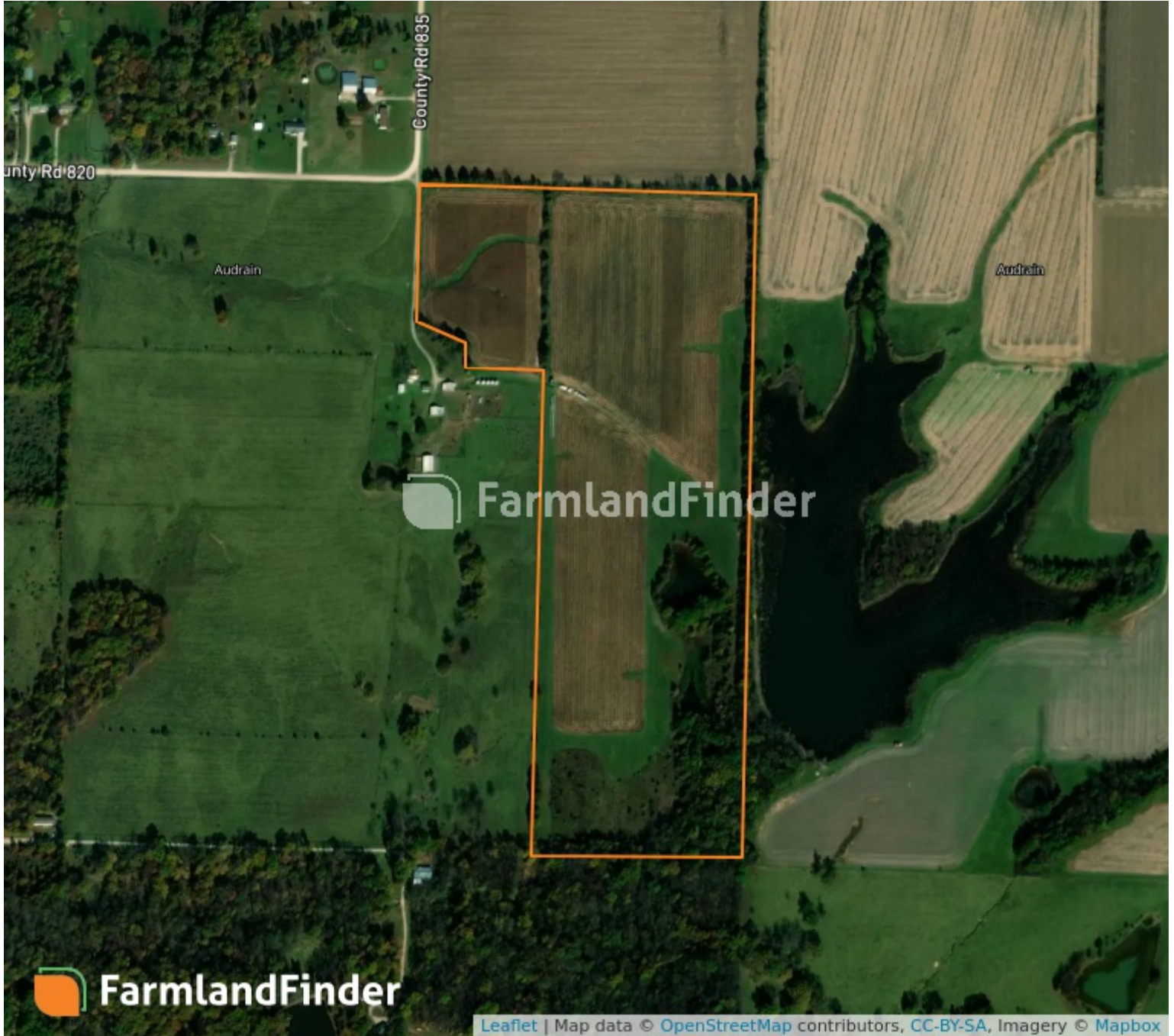
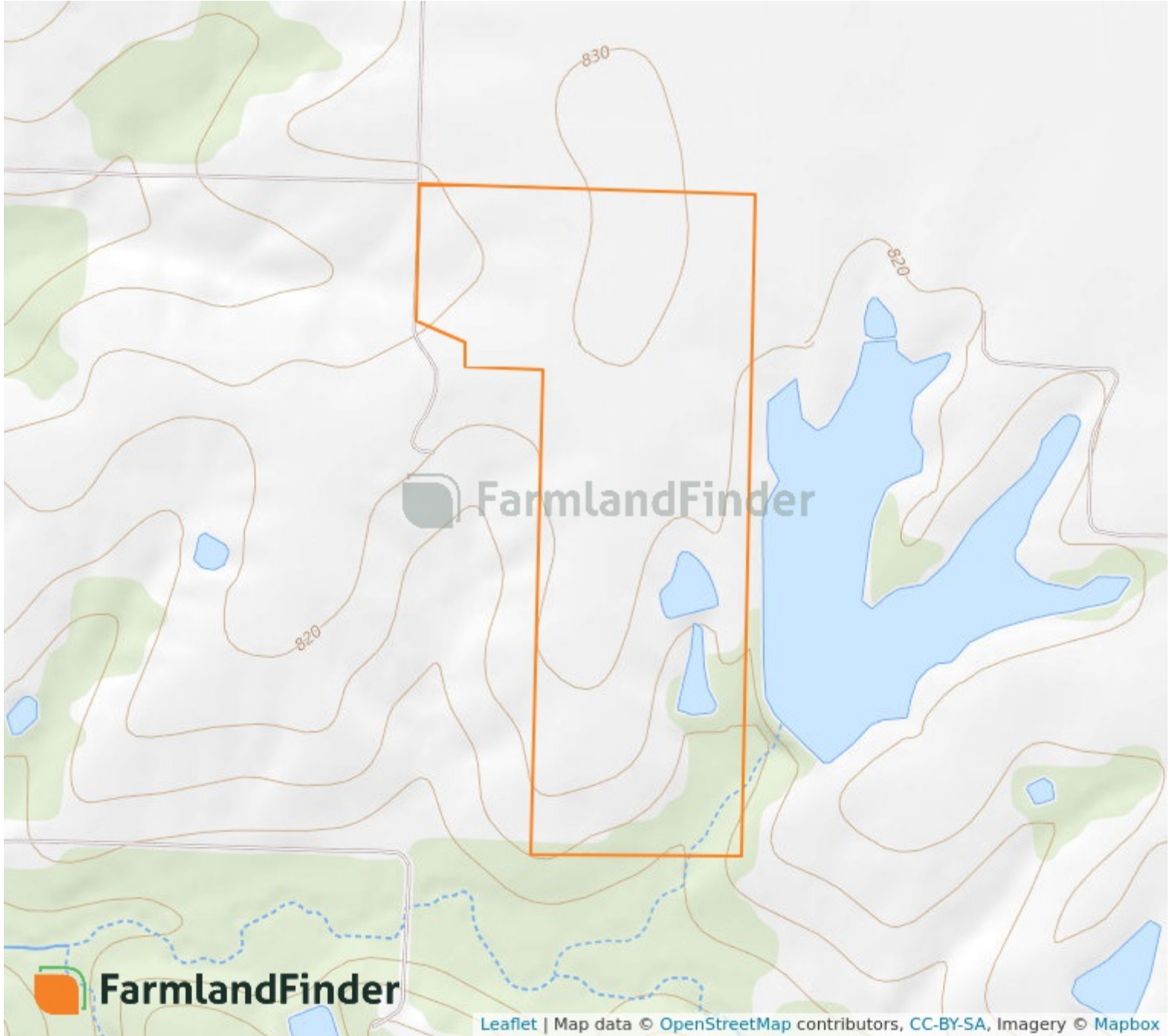


## Aerial Map



9 - 50N - 8W  
Audrain County, Missouri  
39°7'23.03" N, 91°48'48.08" W

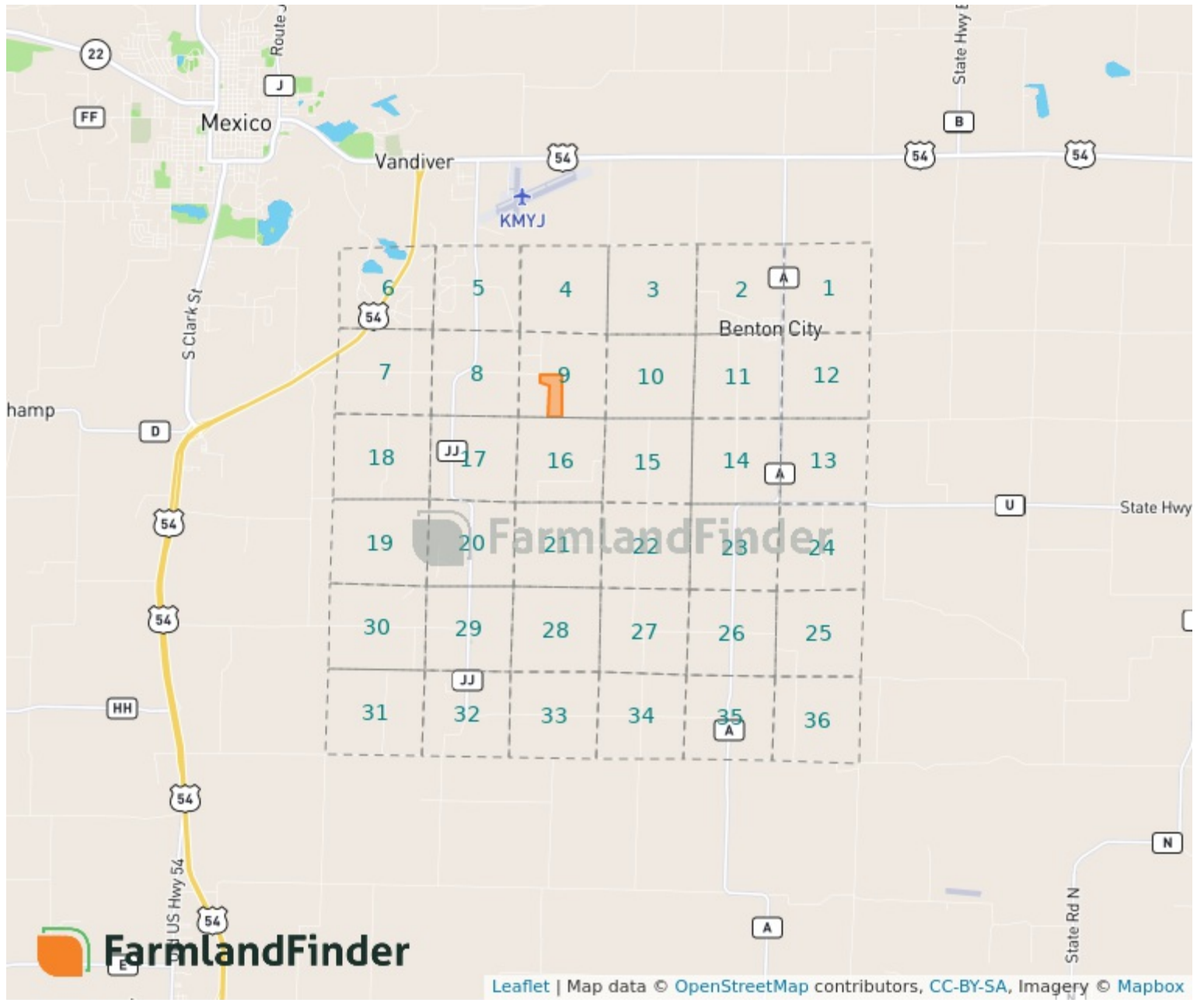
## Topography Map



**9 - 50N - 8W**  
**Audrain County, Missouri**

**39°7'23.03" N, 91°48'48.08" W**

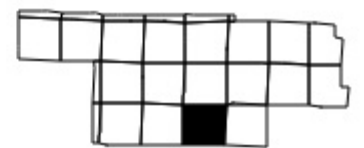
# Plat Map



9 - 50N - 8W

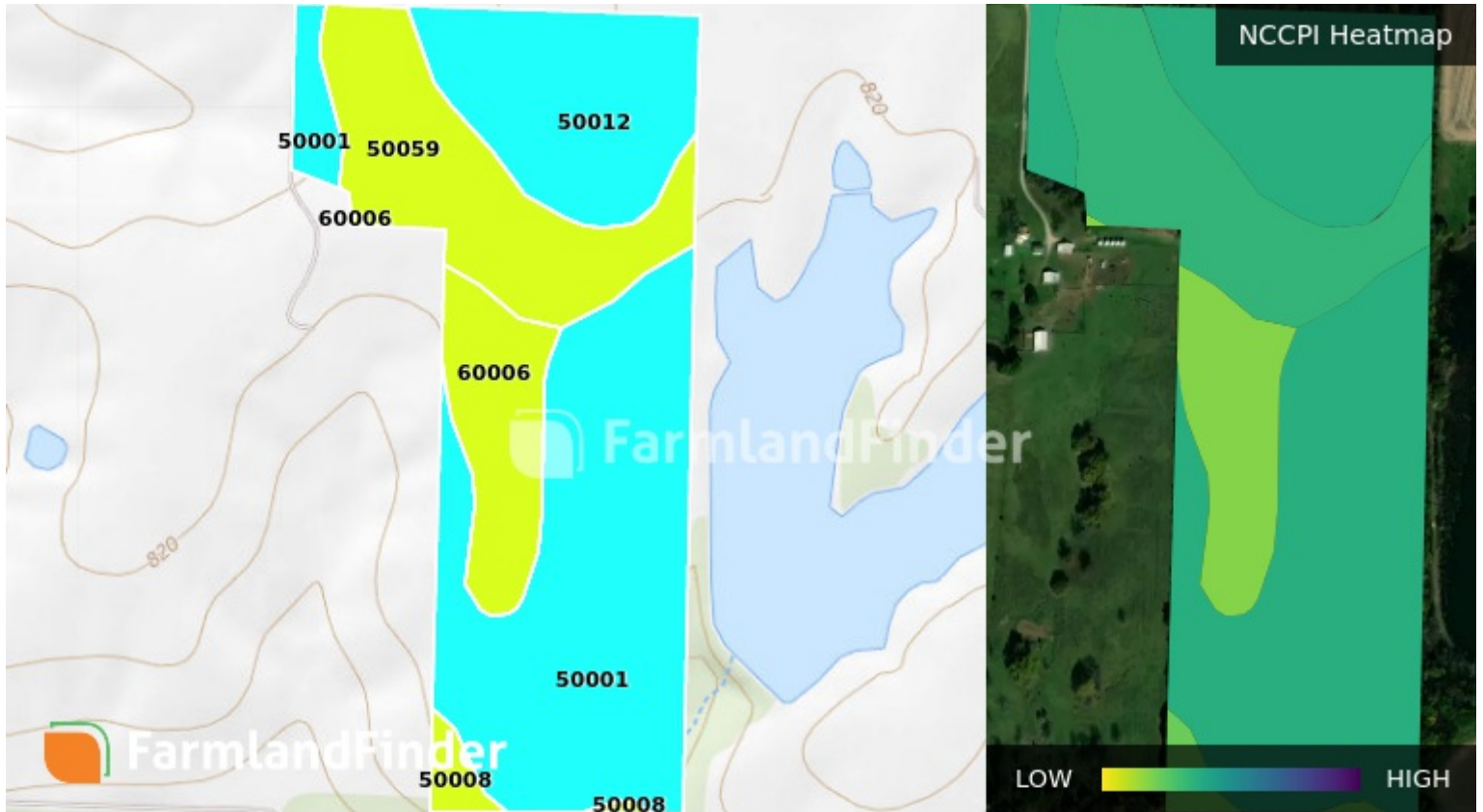
Audrain County, Missouri

39°7'23.03" N, 91°48'48.08" W



Soil Map – Total Acres

Source: NRCS SSURGO



Code	Description	Acres	% of Field	Soil Class	NCCPI
50001	Armstrong loam, 5 to 9% slopes	26.84	46%	3	51.09
50059	Mexico silt loam, 1 to 4% slopes	12.4	21.2%	3	48.53
50012	Putnam silt loam, 0 to 1% slopes	11.52	19.7%	3	50.78
60006	Marion silt loam, 2 to 5% slopes	6.49	11.1%	3	37.89
50008	Keswick silt loam, 5 to 9% slopes	1.12	1.9%	3	40.59
		<b>58.38</b>			<b>48.77</b>