

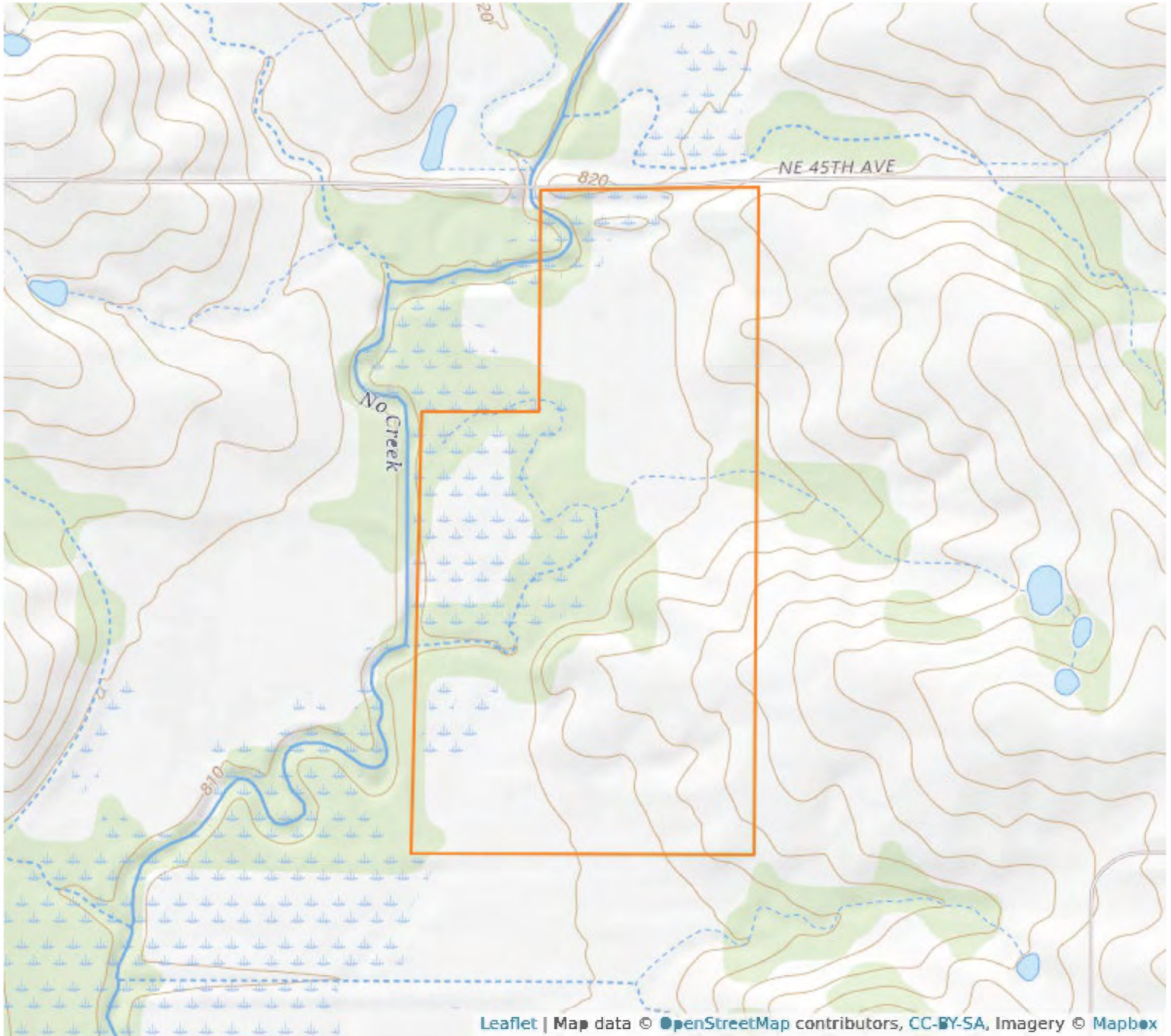
Aerial Map



27 - 62N - 23W
Grundy County, Missouri

40°8'15.92" N, 93°28'40.71" W

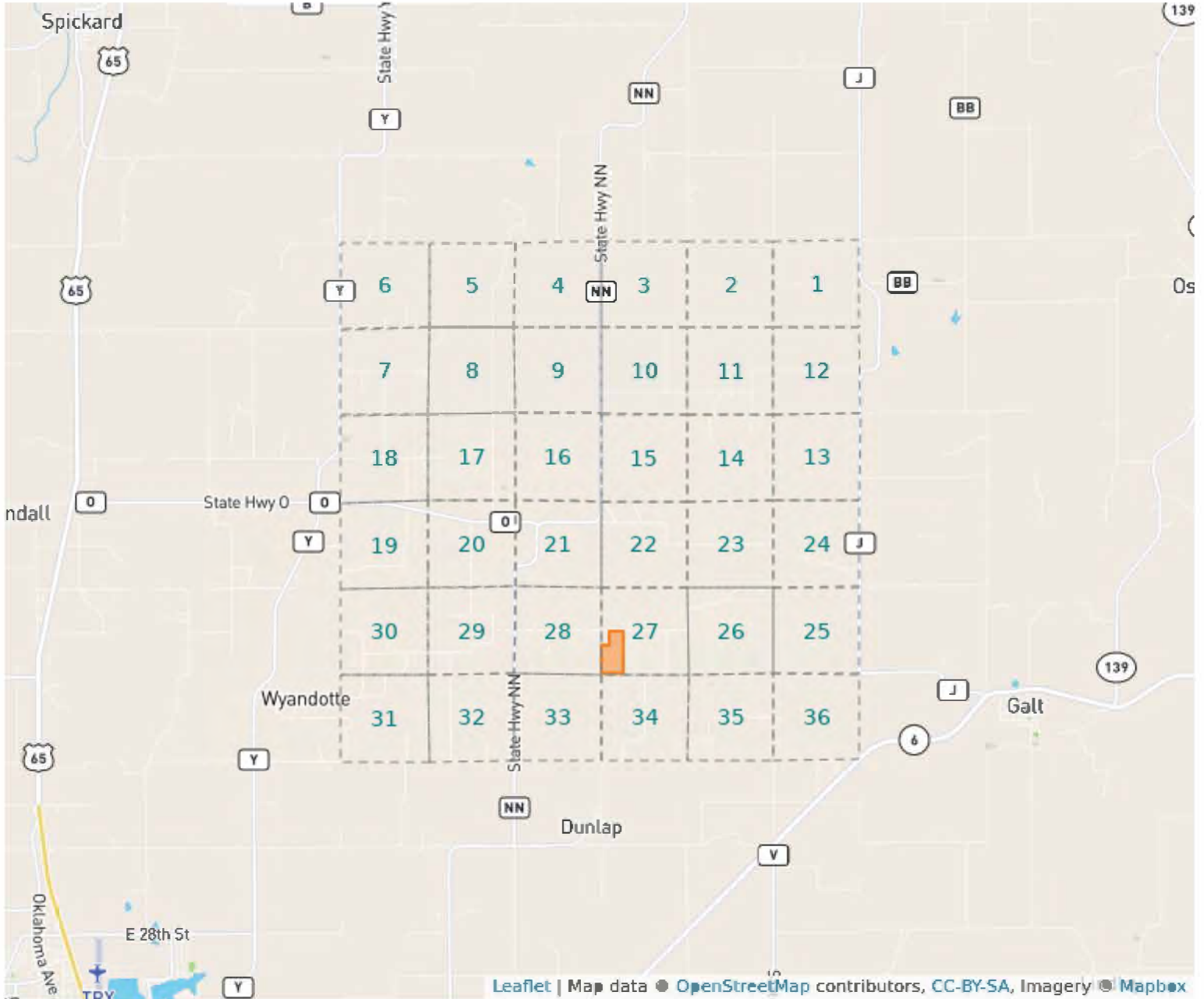
Topography Map



27 - 62N - 23W
Grundy County, Missouri

40°8'15.92" N, 93°28'40.71" W

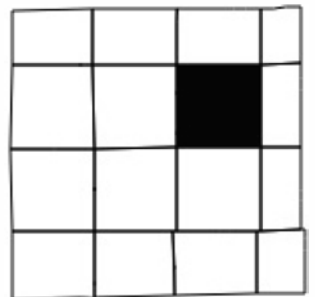
Plat Map



27 - 62N - 23W

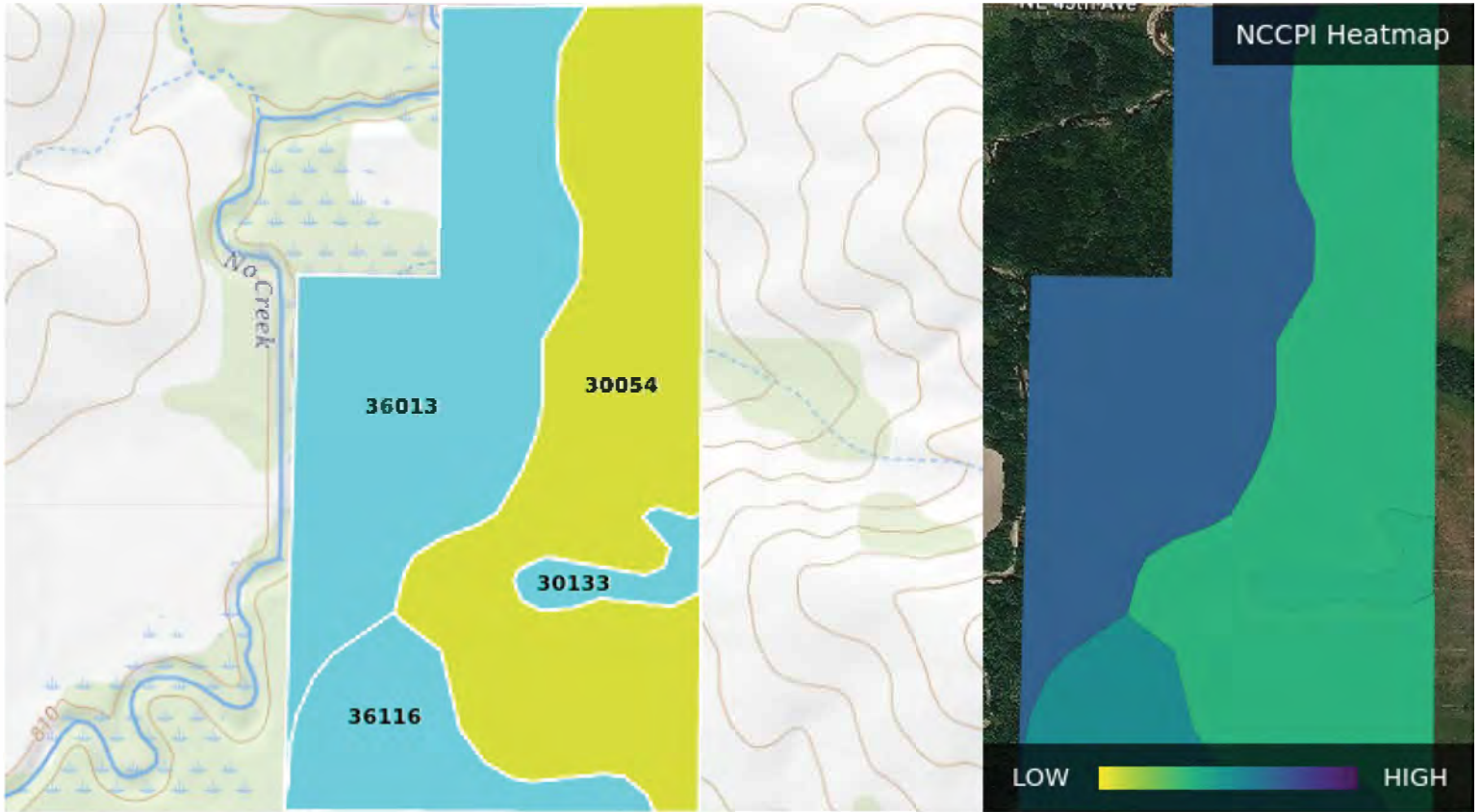
Grundy County, Missouri

40°8'15.92" N, 93°28'40.71" W



Soil Map – Total Acres

Source: NRCS SSURGO



Code	Description	Acres	% of Field	Soil Class	NCCPI
30054	Gara clay loam, 9 to 14% slopes	33.23	47.2%	8	49.59
36013	Fatima silt loam, 0 to 2% slopes	26.74	38%	8	73.62
36116	Zook silty clay loam, heavy till, 0 to 2% slopes, occasionally flooded	8.27	11.7%	8	61.97
30133	Lamoni clay loam, 5 to 9% slopes	2.19	3.1%	8	51.03
		70.44			60.21