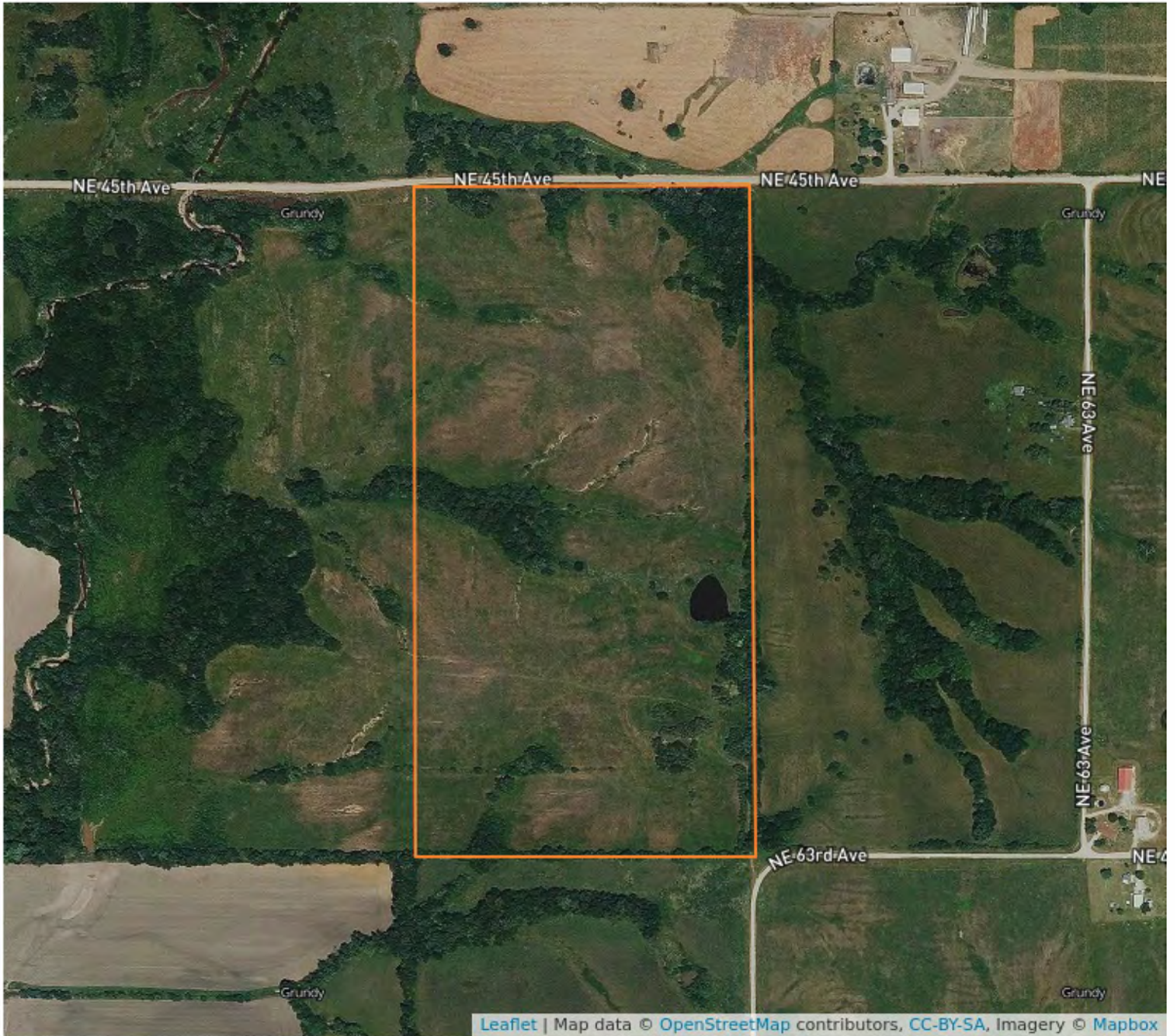


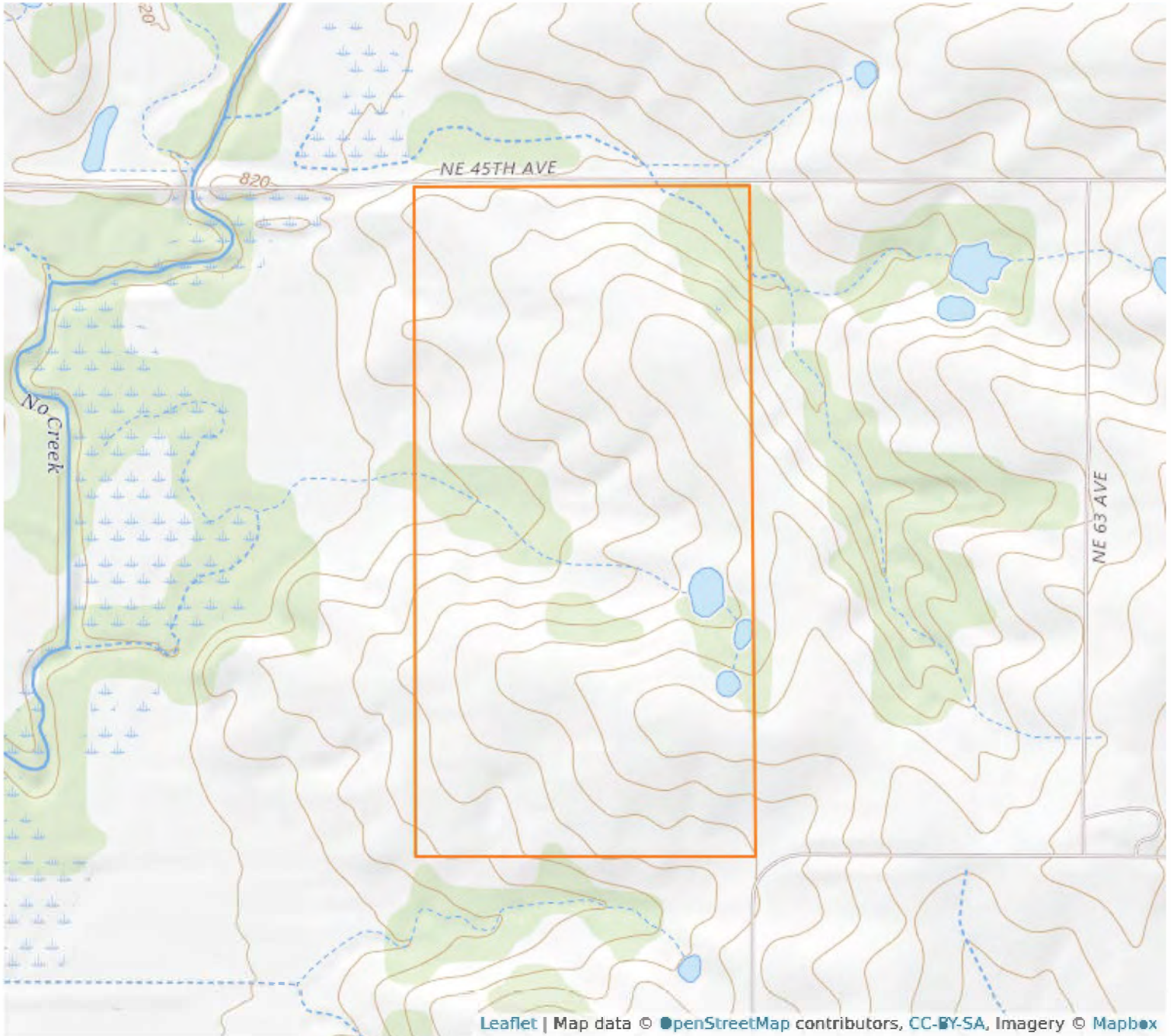
Aerial Map



27 - 62N - 23W
Grundy County, Missouri

40°8'15.98" N, 93°28'23.53" W

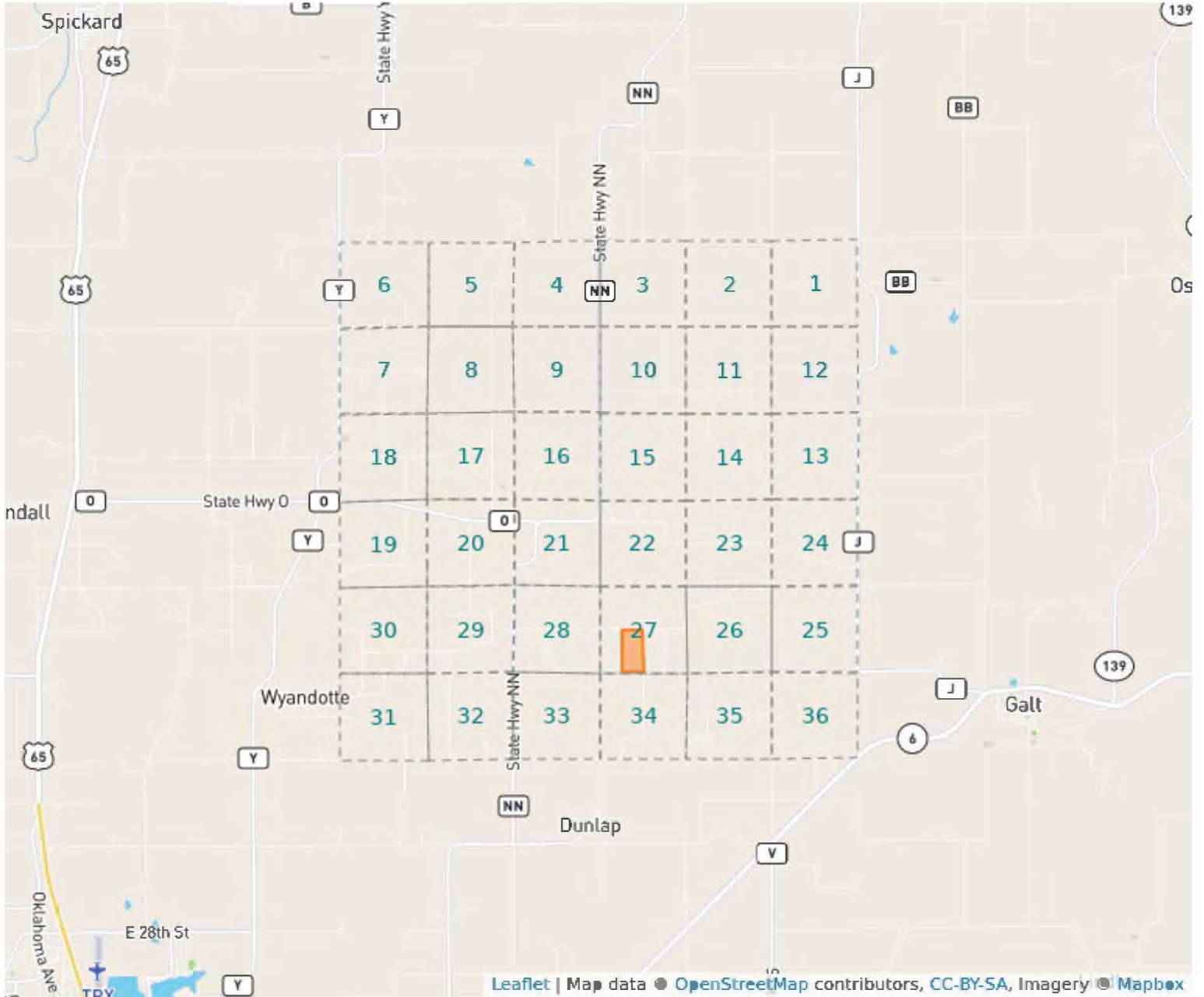
Topography Map



27 - 62N - 23W
Grundy County, Missouri

40°8'15.98" N, 93°28'23.53" W

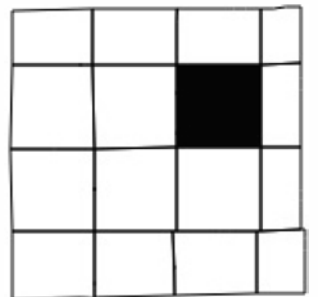
Plat Map



27 - 62N - 23W

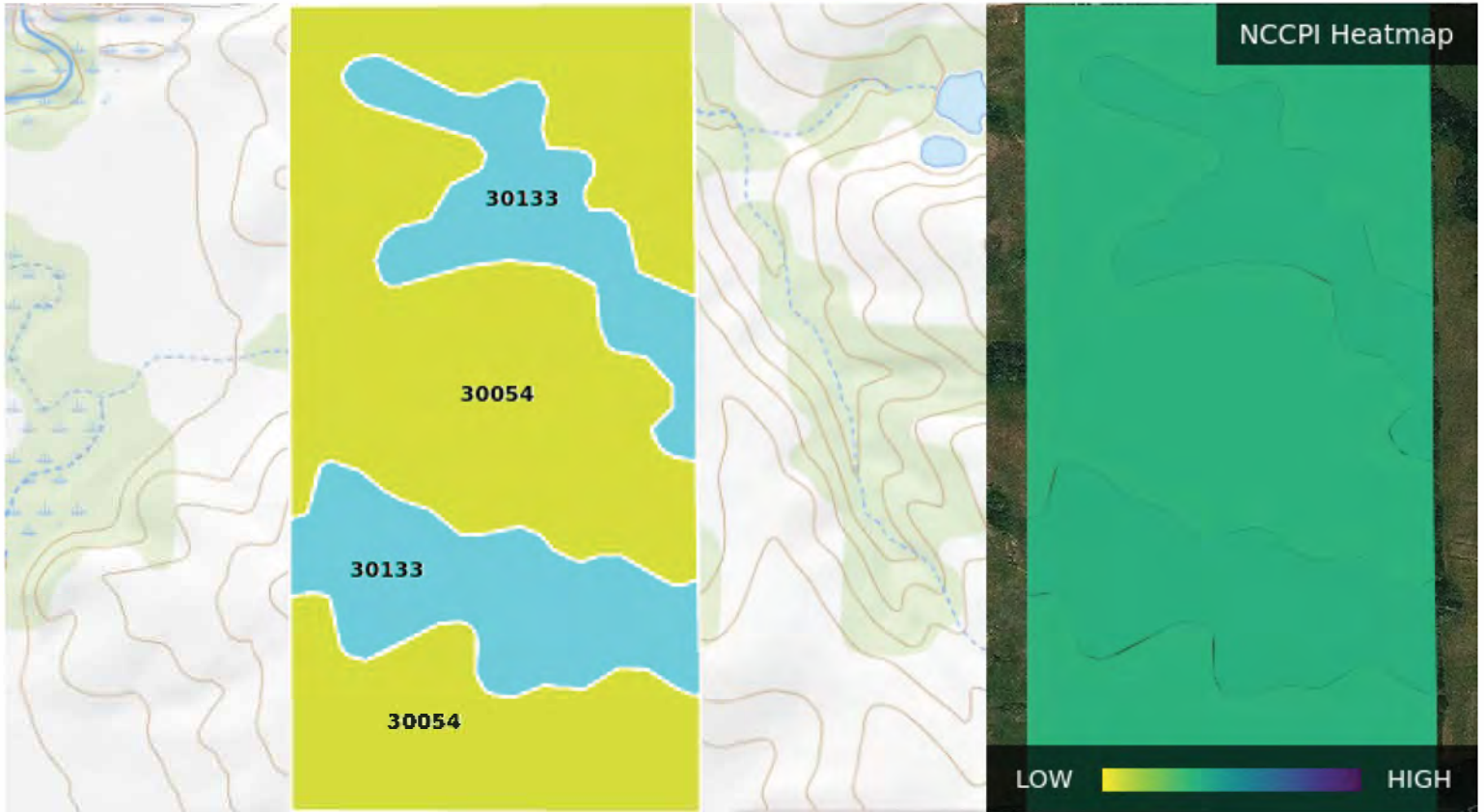
Grundy County, Missouri

40°8'15.98" N, 93°28'23.53" W



Soil Map – Total Acres

Source: NRCS SSURGO



| Code | Description | Acres | % of Field | Soil Class | NCCPI |
|-------|----------------------------------|--------------|------------|------------|--------------|
| 30054 | Gara clay loam, 9 to 14% slopes | 56.92 | 70.9% | 8 | 49.59 |
| 30133 | Lamoni clay loam, 5 to 9% slopes | 23.39 | 29.1% | 8 | 51.03 |
| | | 80.31 | | | 50.01 |