



T R O P H Y
PROPERTIES AND AUCTION
LAND | RECREATIONAL | RESIDENTIAL

24.5 +/- Wooded Acres for Sale in Lake Forest Farm – Washington County, MO

www.TrophyPA.com • (855) 573-5263 • leads@trophyapa.com



PROPERTY ADDRESS:
00 Mill Stone Dr.
Richwoods, MO 63071

PRICE: \$39,900
ACRES: 24.5
COUNTY: Washington

PROPERTY HIGHLIGHTS:

- 24.5 +/- acres in Lake Forest Farms
- All timber ground
- Gated & very private
- Access off State Highway H
- 1 hour from St. Louis
- Access to multiple Lakes

PROPERTY DESCRIPTION:

24.5 +/- wooded acres for sale in Lake Forest Farm an hour from St. Louis in Washington County, Missouri. You can use this land to build the getaway place of your dreams or to just go and play. You also have access to multiple lakes by owning a parcel in Lake Forest Farm. Blacktop to the gate at State Highway H and Mill Stone Drive. Some marketable timber and lots of wildlife sign!



PRESENTED BY:

KEN DAYLEY

Land Specialist - MO

M: (314) 409-4568

P: (855) 573-5263 x704

E: kdayley@trophyapa.com

Trophy Properties and Auction

15480 Clayton Road

Suite 101

Ballwin, MO 63011

www.Trophyapa.com

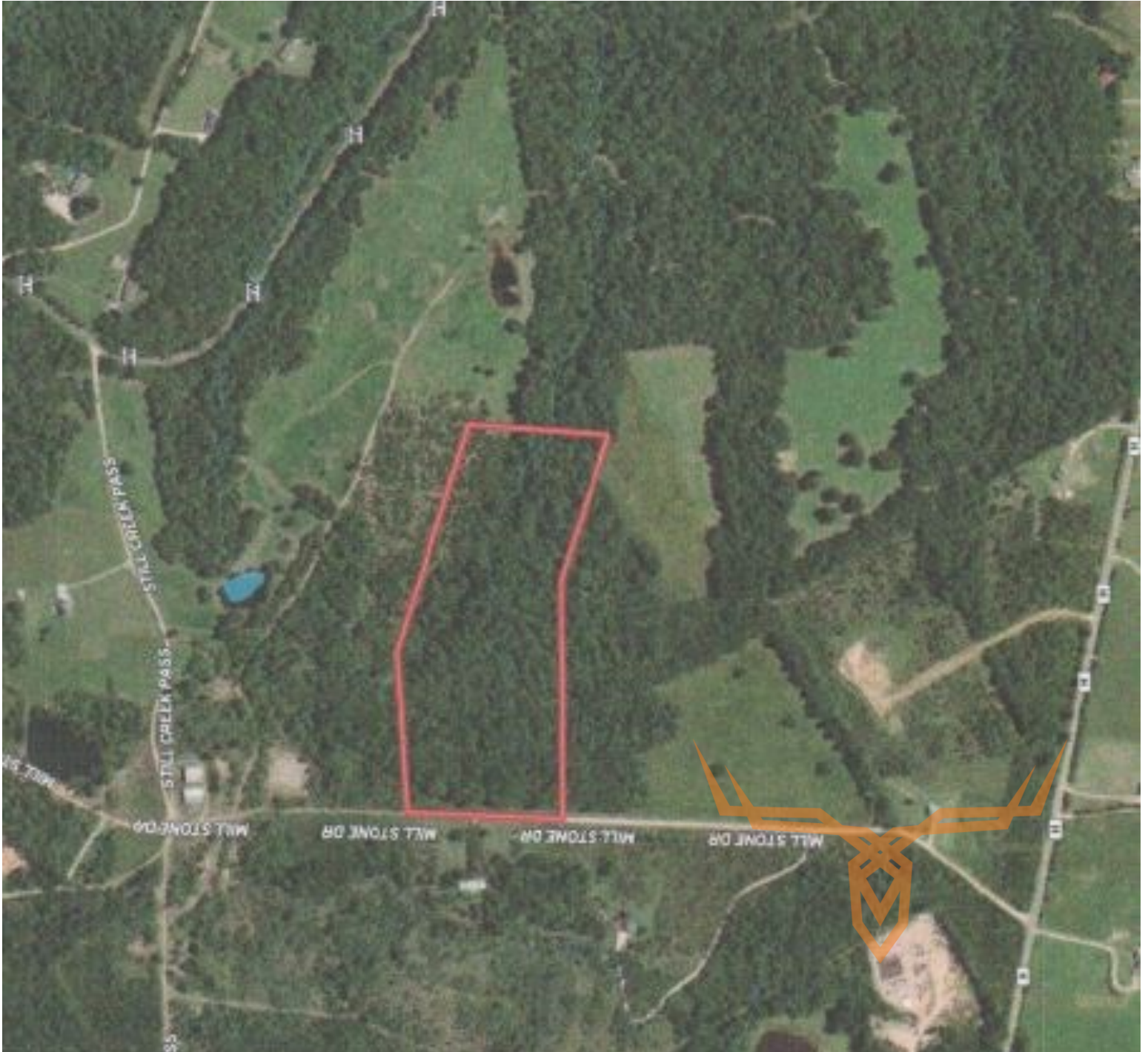
leads@trophyapa.com



TROPHY
PROPERTIES AND AUCTION
LAND | RECREATIONAL | RESIDENTIAL

24.5 +/- Wooded Acres for Sale in Lake Forest Farm – Washington County, MO

www.TrophyPA.com • (855) 573-5263 • leads@trophy.com



Broker does not guarantee the accuracy of sq. ft., lot size, or other information, buyer is advised to independently verify the accuracy of information through personal inspection and with appropriate professionals

TAXES: \$22

TAX YEAR: 2018