



**T R O P H Y**  
 PROPERTIES AND AUCTION  
 LAND | RECREATIONAL | RESIDENTIAL

# Single Family Home and/or Recreational Property for Sale

Trophy Properties and Auction • 855.573.5263 • leads@trophy.com

**PRICE IMPROVED**



**PROPERTY ADDRESS:**  
 21585 Hwy 54  
 Louisiana, MO 63353

**PRICE:** \$250,000  
**ACRES:** 35.83  
**COUNTY:** Pike

**PROPERTY DESCRIPTION:**

This 3,024 sq. foot home for sale in Pike County, Missouri has a beautiful wooded 35.83 surveyed acre lot which has good deer and turkey hunting. The main floor has 3 bedrooms, 2 full bath, central vac, sky lights, vaulted ceilings, and washer dryer hookups. The finished walkout basement has a kitchen, living room, full bath, three bonus rooms, washer dryer hookups, and its own private access.

The 30 plus acres of timber is loaded with oak trees, has a small wildlife watering pond, trails throughout for great access. Deer and turkey are harvested on this property every year. If you are looking for a weekend getaway or a place to live with hunting in your back yard, this is 35.83 acres is the perfect place.

**PROPERTY HIGHLIGHTS:**

- 35.83 surveyed acres
- 30 +/- acres of timber with trails throughout
- 3 bed, 3 bath home with finished walk-out lower level with separate entrance
- Wildlife watering pond
- Covered front porch and patio in back
- Good deer & turkey hunting
- Oversized 2 garage
- Vaulted ceilings, central vac and sky lights
- Washer dryer hookups on both levels
- Alarm system



**PRESENTED BY:**

**JASON CLEVELAND**

**Broker/Partner**

M: 636.751.4579

P: 855.573.5263 x701

jcleland@trophy.com

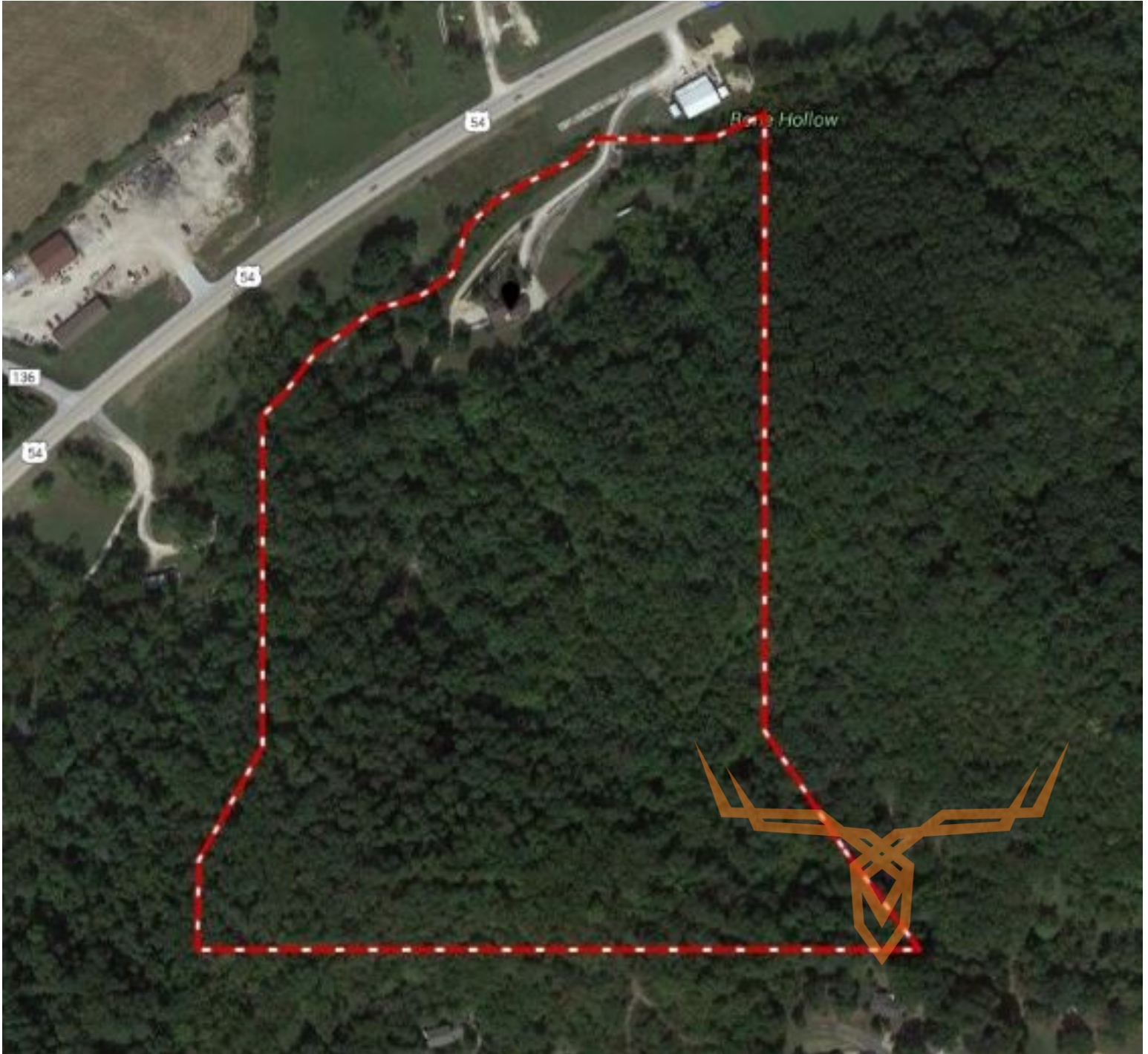
Trophy Properties and Auction  
 15480 Clayton Road  
 Suite 101  
 Ballwin, MO 63011  
 www.Trophy.com  
 leads@trophy.com



**TROPHY**  
PROPERTIES AND AUCTION  
LAND | RECREATIONAL | RESIDENTIAL

# Single Family Home and/or Recreational Property for Sale

Trophy Properties and Auction • 855.573.5263 • leads@trophy.com



**TAXES:** \$850

**TAX YEAR:** 2016

**TILLABLE:** 0 Acres

**TIMBERED:** 34 Acres

**PASTURED:** 0 Acres