

# Aerial Map



map center: 40.439988, -91.436680

0ft 430ft 860ft



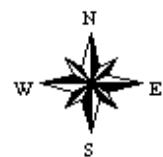
TROPHY  
PROPERTIES AND AUCTION  
LAND (RECREATIONAL) RESIDENTIAL

Maps Provided By:



CUSTOMIZED ONLINE MAPPING  
© AgriData, Inc. 2018 www.AgriDataInc.com

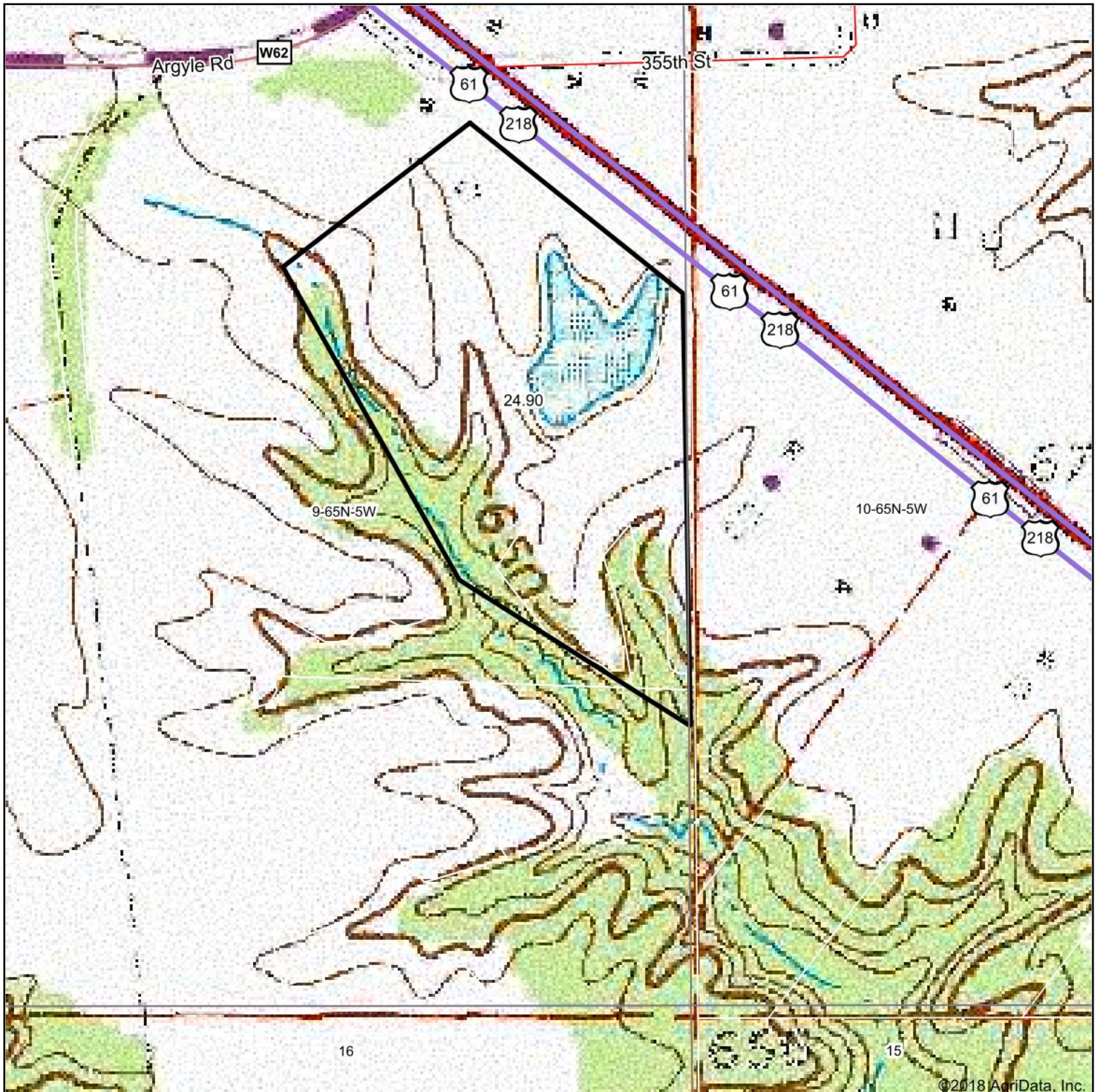
**9-65N-5W**  
**Lee County**  
**Iowa**



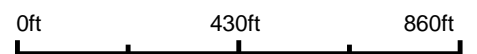
11/6/2018



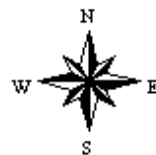
# Topography Map



map center: 40.439988, -91.436680

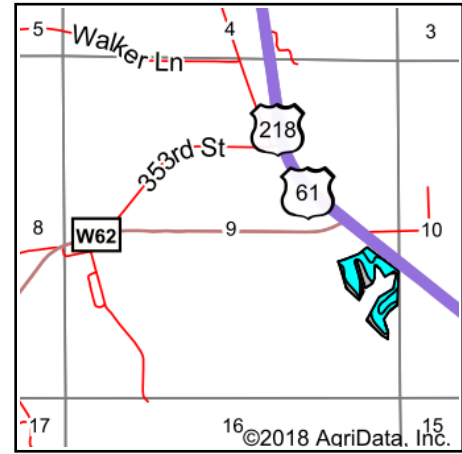
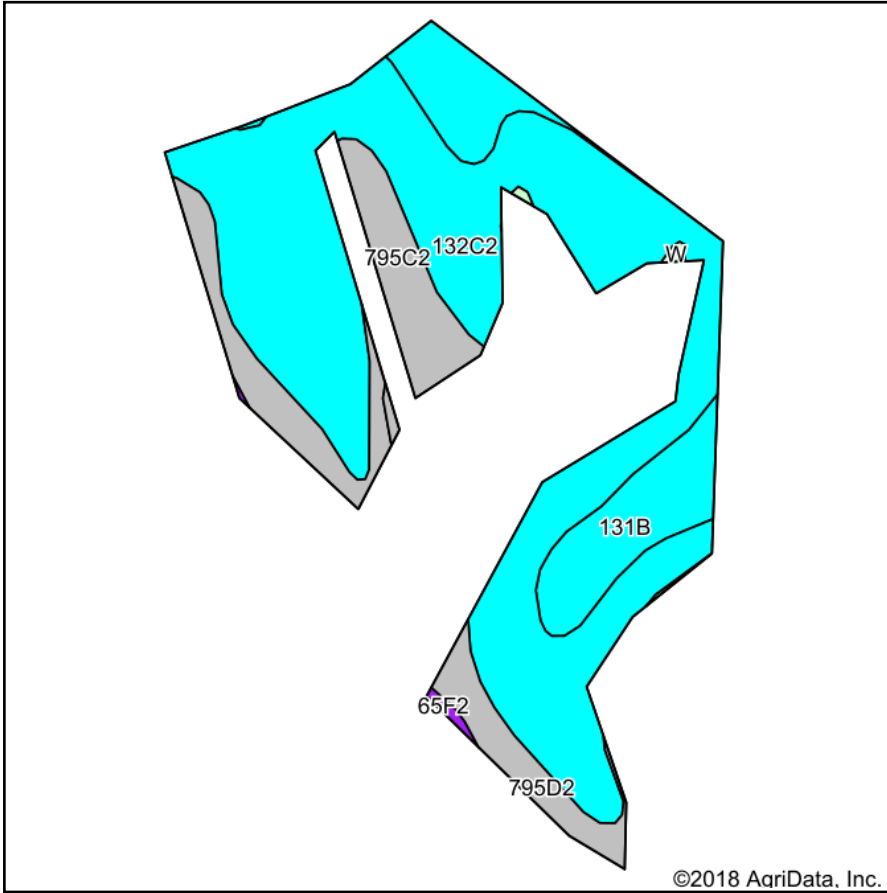


**9-65N-5W**  
**Lee County**  
**Iowa**



11/6/2018

# Soils Map



State: **Iowa**  
 County: **Lee**  
 Location: **9-65N-5W**  
 Township: **Jackson**  
 Acres: **12.2**  
 Date: **11/6/2018**

TROPHY PROPERTIES AND AUCTION LAND PROFESSIONAL INCORPORATED

Maps Provided By:

**surety**  
 CUSTOMIZED ONLINE MAPPING  
 © AgriData, Inc. 2018 www.AgriDataInc.com

**Area Symbol: IA111, Soil Area Version: 26**

Code	Soil Description	Acres	Percent of field	Non-Irr Class Legend	Non-Irr Class *c	CSR2**	CSR	*n NCCPI Soybeans
132C2	Weller silt loam, 5 to 9 percent slopes, moderately eroded	8.10	66.4%		IIle	59	40	68
131B	Pershing silt loam, 2 to 5 percent slopes	1.83	15.0%		IIle	70	67	62
795C2	Ashgrove silt loam, 5 to 9 percent slopes, moderately eroded	1.61	13.2%		IVe	6	15	40
795D2	Ashgrove silt loam, 9 to 14 percent slopes, moderately eroded	0.66	5.4%		IVe	7	5	37
<b>Weighted Average</b>						<b>50.8</b>	<b>38.9</b>	<b>*n 61.7</b>

\*\*IA has updated the CSR values for each county to CSR2.

\*n: The aggregation method is "Weighted Average using major components"

\*c: Using Capabilities Class Dominant Condition Aggregation Method

Soils data provided by USDA and NRCS.