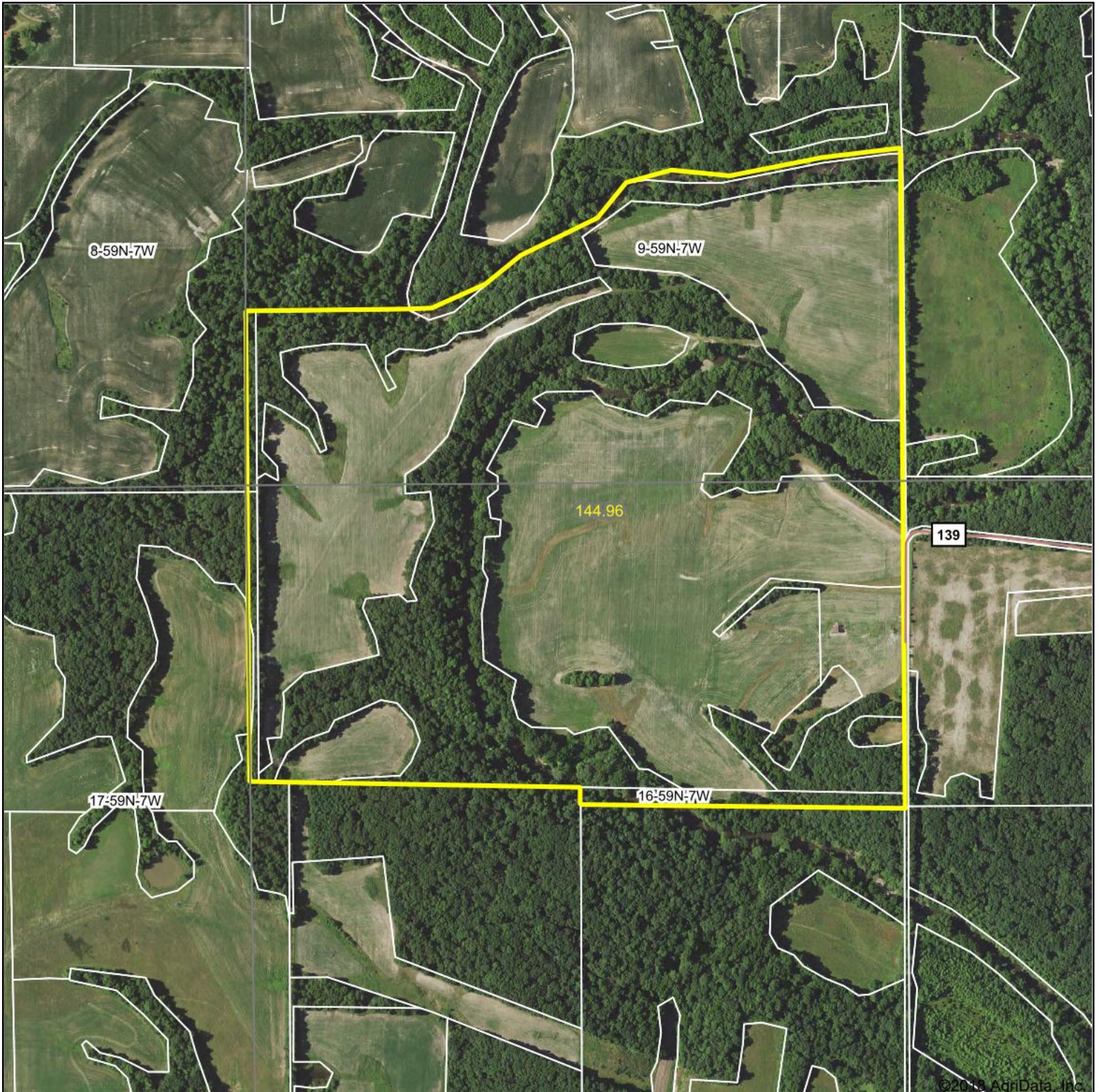


Aerial Map



©2018 AgriData, Inc.

map center: 39.917539, -91.689509

0ft 643ft 1286ft



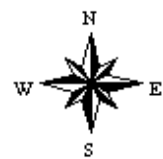
TROPHY
PROPERTIES AND AUCTION
LAND (RECREATIONAL) RESIDENTIAL

Maps Provided By:



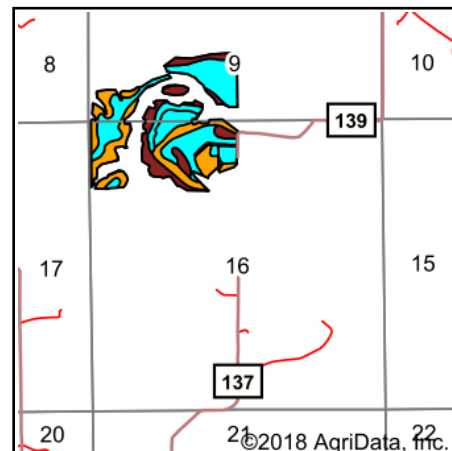
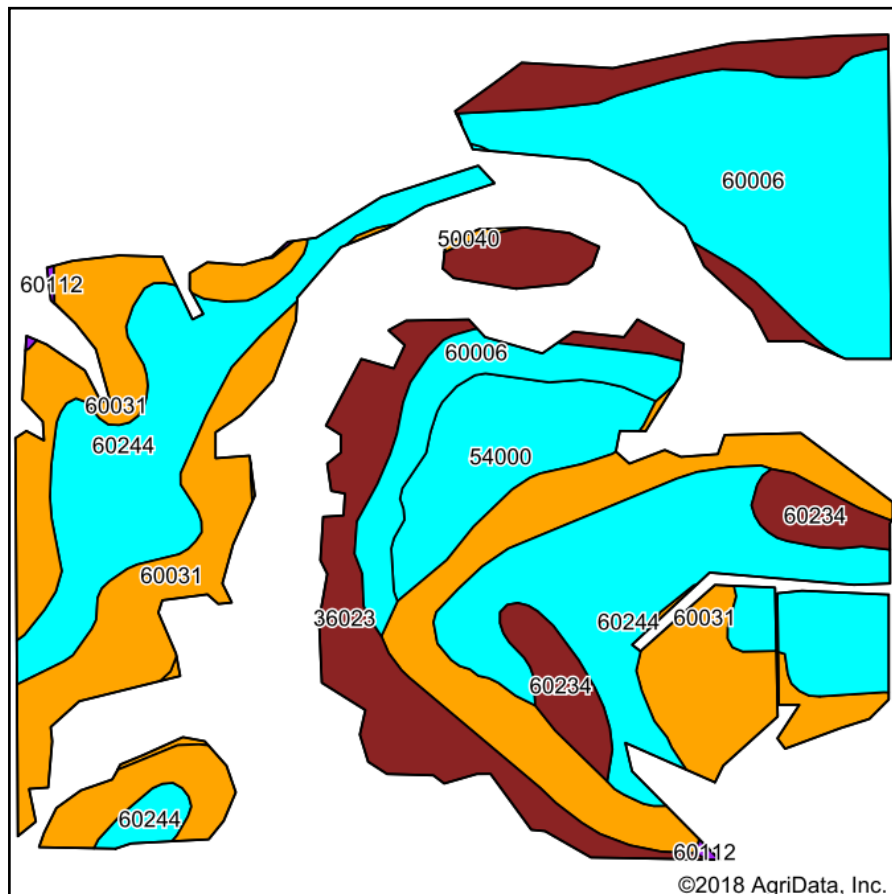
© AgriData, Inc. 2018 www.AgriDataInc.com

16-59N-7W
Marion County
Missouri



9/9/2018

Soils Map



State: **Missouri**
 County: **Marion**
 Location: **16-59N-7W**
 Township: **Round Grove**
 Acres: **89.75**
 Date: **9/9/2018**



Maps Provided By:



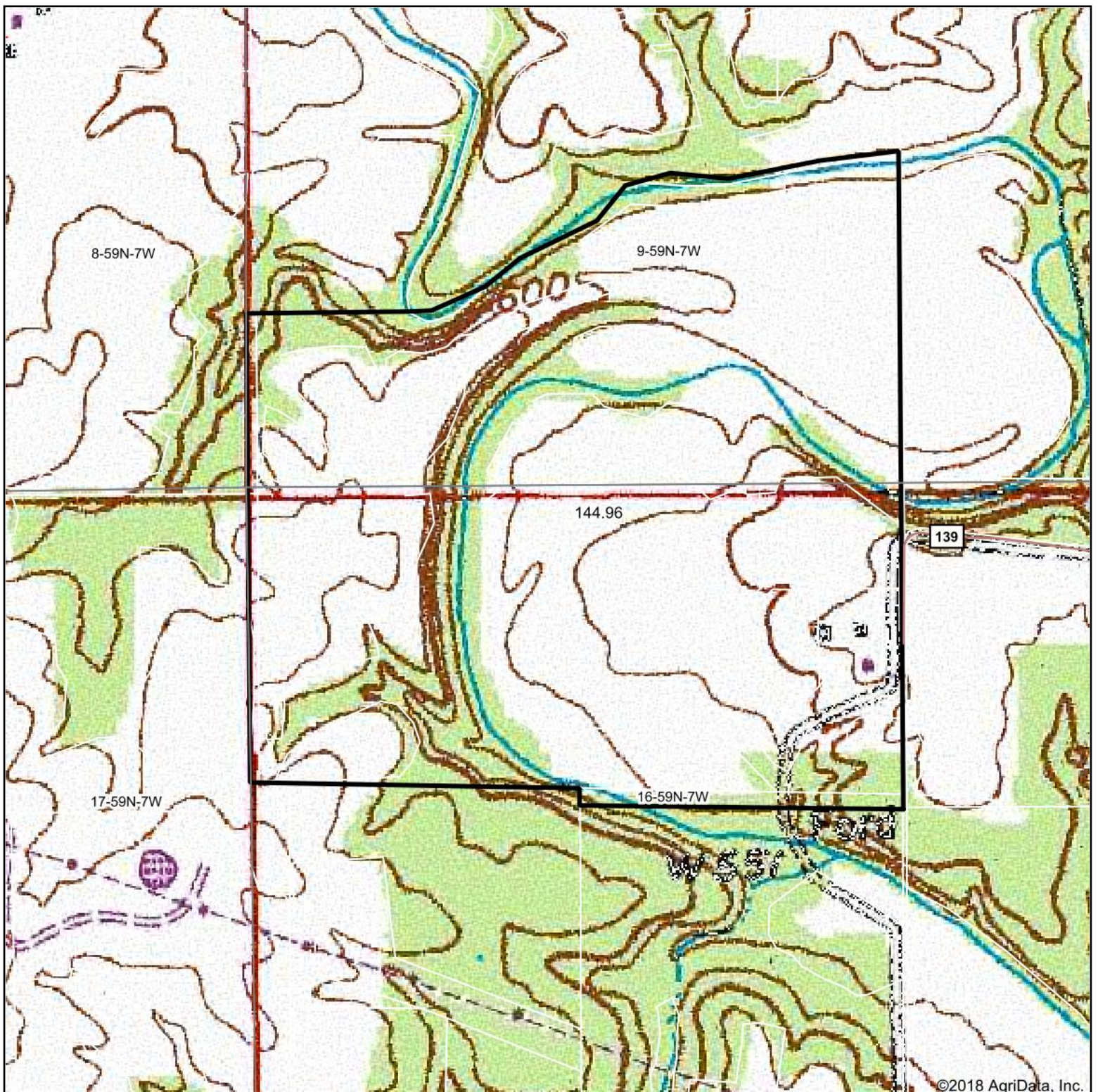
Area Symbol: MO127, Soil Area Version: 17

Code	Soil Description	Acres	Percent of field	Non-Irr Class Legend	Non-Irr Class *c	Corn	Soybeans	Wheat	NCCPI Soybeans
60031	Winfield silt loam, 9 to 14 percent slopes, eroded	26.24	29.2%		Vle				58
60244	Winfield silt loam, 5 to 10 percent slopes, eroded	23.81	26.5%		Ille	132	40	52	62
60006	Marion silt loam, 2 to 5 percent slopes	17.68	19.7%		Ille				41
36023	Landes fine sandy loam, 0 to 2 percent slopes, occasionally flooded	12.64	14.1%		Ilw				59
54000	Chariton silt loam, 0 to 2 percent slopes, rarely flooded	5.67	6.3%		Illw				54
60234	Weller silt loam, 2 to 5 percent slopes	3.33	3.7%		Ile				65
50040	Lindley loam, 14 to 20 percent slopes, eroded	0.25	0.3%		Vle				48
60112	Goss very gravelly silt loam, 14 to 45 percent slopes	0.13	0.1%		Vlle				6
Weighted Average						35	10.6	13.8	55.8

*c: Using Capabilities Class Dominant Condition Aggregation Method

Soils data provided by USDA and NRCS.

Topography Map



©2018 AgriData, Inc.

map center: 39.917539, -91.689509

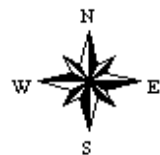
0ft 643ft 1286ft



Maps Provided By:



16-59N-7W
Marion County
Missouri



9/9/2018