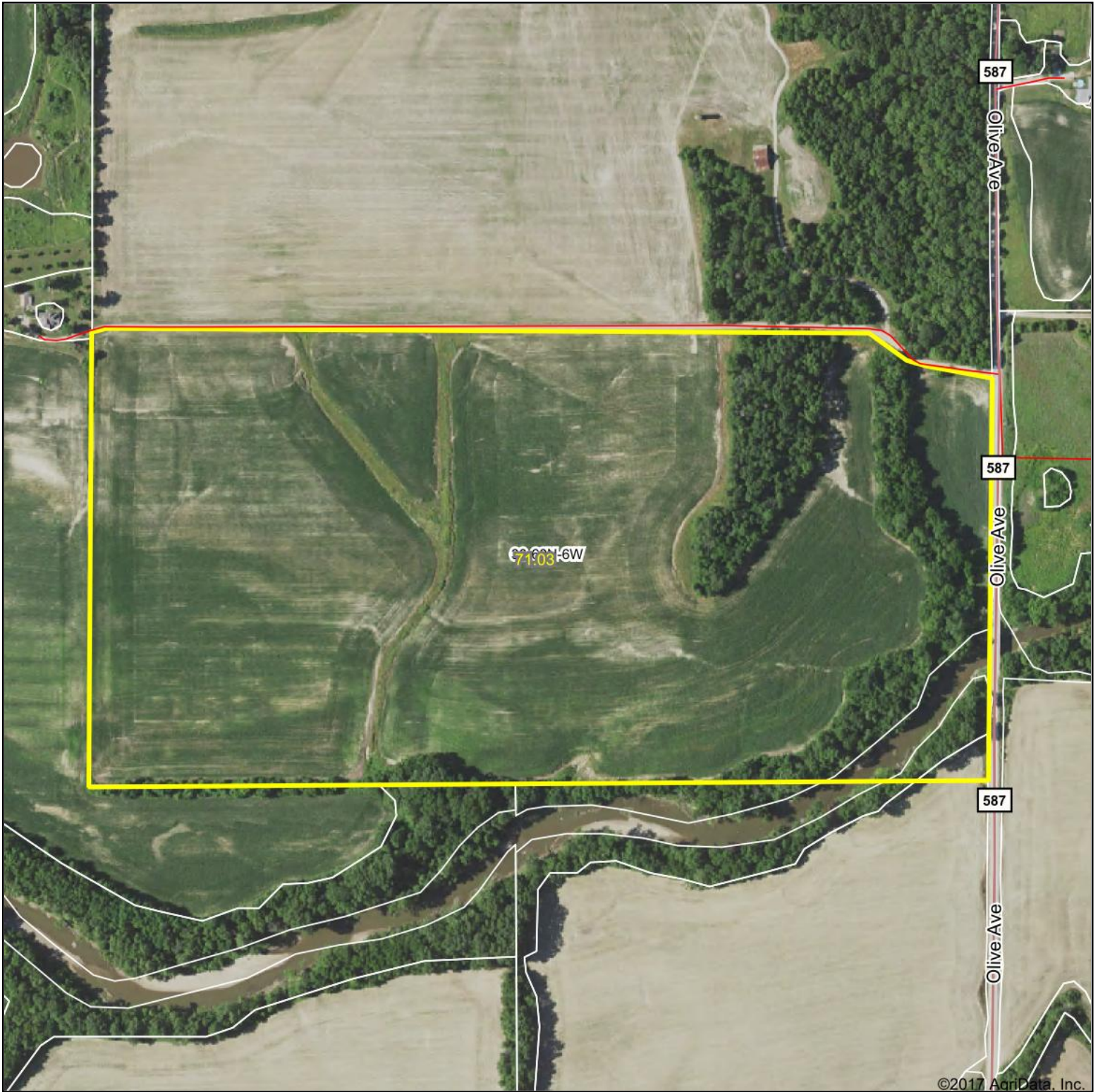


# Aerial Map



©2017 AgriData, Inc.

map center: 39.967041, -91.608159



TROPHY  
PROPERTIES AND AUCTION  
LAND | RECREATIONAL | RESIDENTIAL

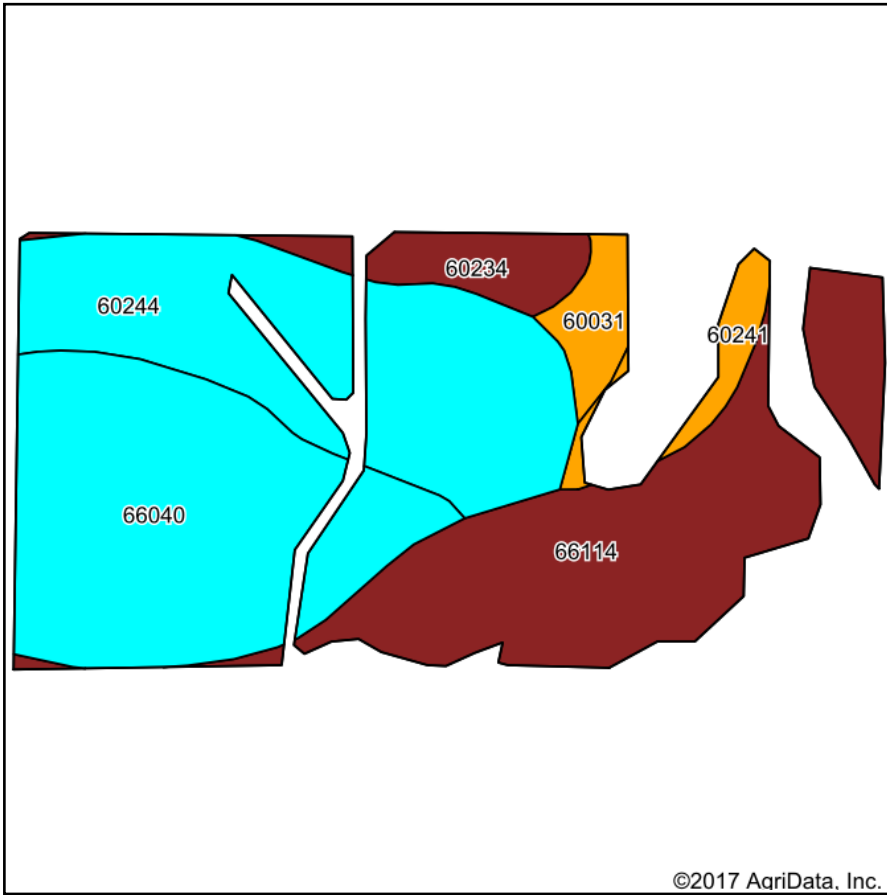
Maps Provided By:  
 **surety**<sup>®</sup>  
CUSTOMIZED ONLINE MAPPING  
© AgriData, Inc. 2017 [www.AgriDataInc.com](http://www.AgriDataInc.com)

**30-60N-6W**  
**Lewis County**  
**Missouri**

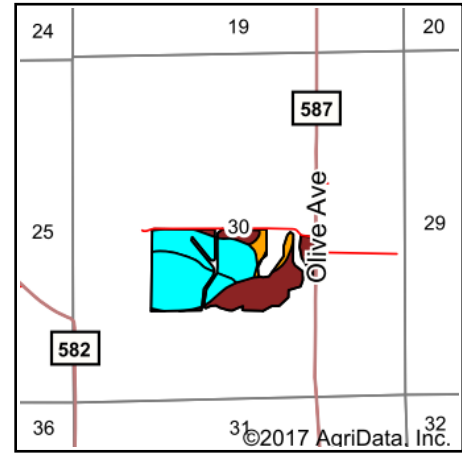


12/14/2017

# Soils Map



Soils data provided by USDA and NRCS.



State: **Missouri**  
 County: **Lewis**  
 Location: **30-60N-6W**  
 Township: **Union**  
 Acres: **56.7**  
 Date: **12/14/2017**



TROPHY  
 PROPERTIES AND AUCTION  
 LAND, INDUSTRIAL, RESIDENTIAL

Maps Provided By:



© AgriData, Inc. 2017

www.AgriDataInc.com



## Area Symbol: MO111, Soil Area Version: 18

Code	Soil Description	Acres	Percent of field	Non-Irr Class Legend	Non-Irr Class *c	Corn	Soybeans	Wheat
66040	Kickapoo fine sandy loam, 0 to 2 percent slopes, frequently flooded	18.08	31.9%		Illw			
66114	Westerville silt loam, 0 to 3 percent slopes, occasionally flooded	16.41	28.9%		Ilw			
60244	Winfield silt loam, 5 to 10 percent slopes, eroded	16.06	28.3%		Ille	132	40	52
60234	Weller silt loam, 2 to 5 percent slopes	2.95	5.2%		Ile			
60031	Winfield silt loam, 9 to 14 percent slopes, eroded	1.75	3.1%		Vle			
60241	Winfield silt loam, 14 to 25 percent slopes	1.45	2.6%		Vle			
<b>Weighted Average</b>						<b>37.4</b>	<b>11.3</b>	<b>14.7</b>

\*c: Using Capabilities Class Dominant Condition Aggregation Method

Soils data provided by USDA and NRCS.