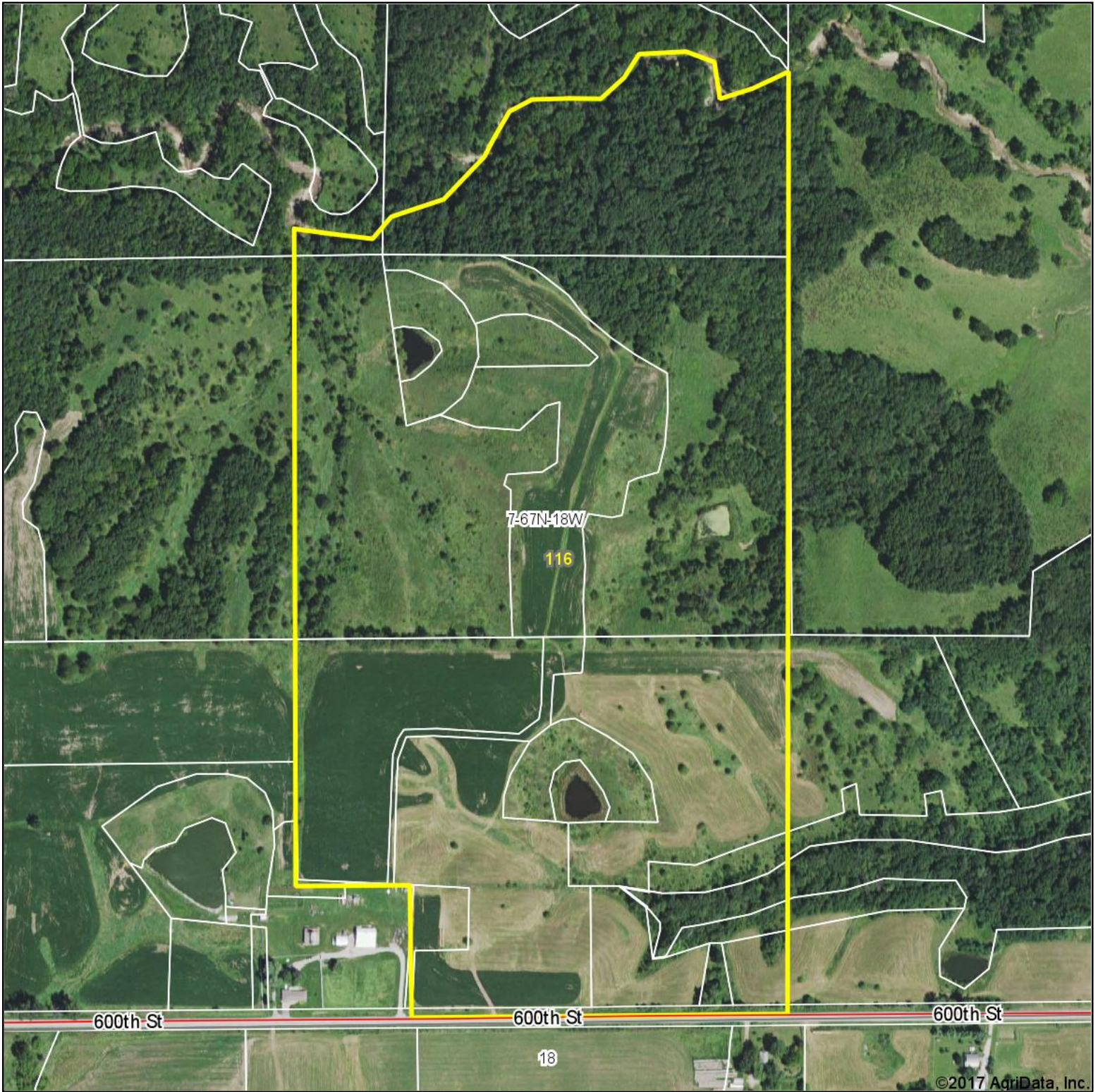


# Aerial Map



©2017 AgriData, Inc.

map center: 40.613638, -92.975066



**7-67N-18W**  
**Appanoose County**  
**Iowa**



7/24/2017



**TROPHY**  
PROPERTIES AND AUCTION  
LAND | RECREATIONAL | RESIDENTIAL

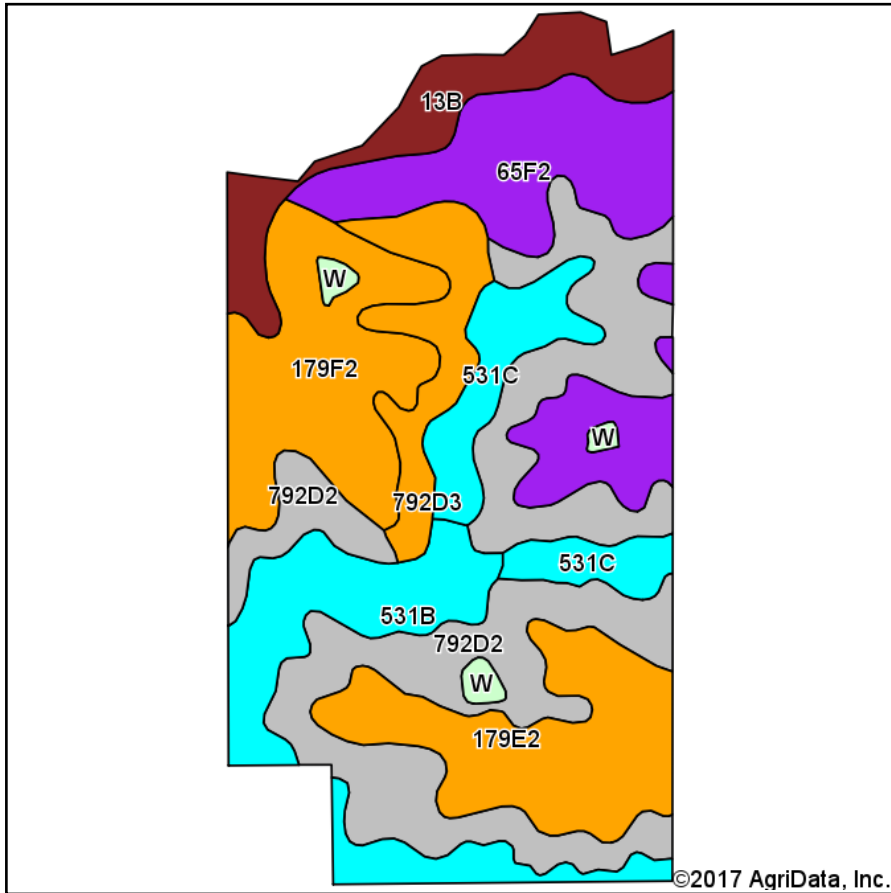
Maps Provided By:



© AgriData, Inc. 2017

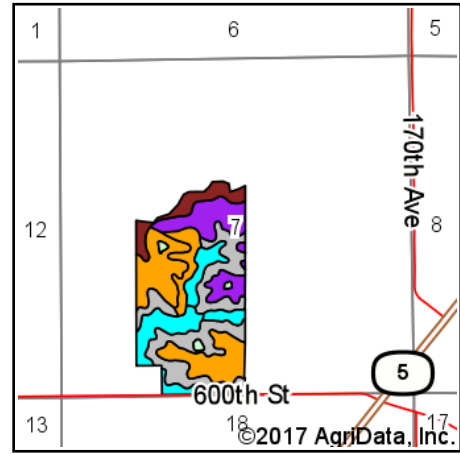
www.AgriDataInc.com

# Soils Map



Soils data provided by USDA and NRCS.

©2017 AgriData, Inc.



State: **Iowa**  
 County: **Appanoose**  
 Location: **7-67N-18W**  
 Township: **Pleasant**  
 Acres: **116**  
 Date: **7/24/2017**



TROPHY  
 PROPERTIES AND AUCTION  
 LAND | REAL ESTATE | RESIDENTIAL

Maps Provided By:



© AgriData, Inc. 2017

www.AgriDataInc.com



Area Symbol: IA007, Soil Area Version: 22

Code	Soil Description	Acres	Percent of field	Non-Irr Class Legend	Non-Irr Class *c	CSR2**	CSR
792D2	Armstrong loam, 9 to 14 percent slopes, moderately eroded	31.69	27.3%		Ive	26	11
65F2	Lindley loam, 18 to 25 percent slopes, moderately eroded	18.22	15.7%		Vlle	10	10
179F2	Gara loam, 18 to 24 percent slopes, moderately eroded	14.99	12.9%		Vle	12	13
179E2	Gara loam, 14 to 18 percent slopes, moderately eroded	13.64	11.8%		Vle	24	33
531B	Kniffin silt loam, 2 to 5 percent slopes	12.86	11.1%		Ille	55	58
13B	Olmitz-Vesser-Colo complex, 2 to 5 percent slopes	8.79	7.6%		Ilw	79	68
531C	Kniffin silt loam, 5 to 9 percent slopes	7.89	6.8%		Ille	52	36
792D3	Armstrong soils, 9 to 14 percent slopes, severely eroded	6.74	5.8%		Vle	5	5
W	Water	1.18	1.0%			0	0
<b>Weighted Average</b>						<b>29</b>	<b>24.5</b>

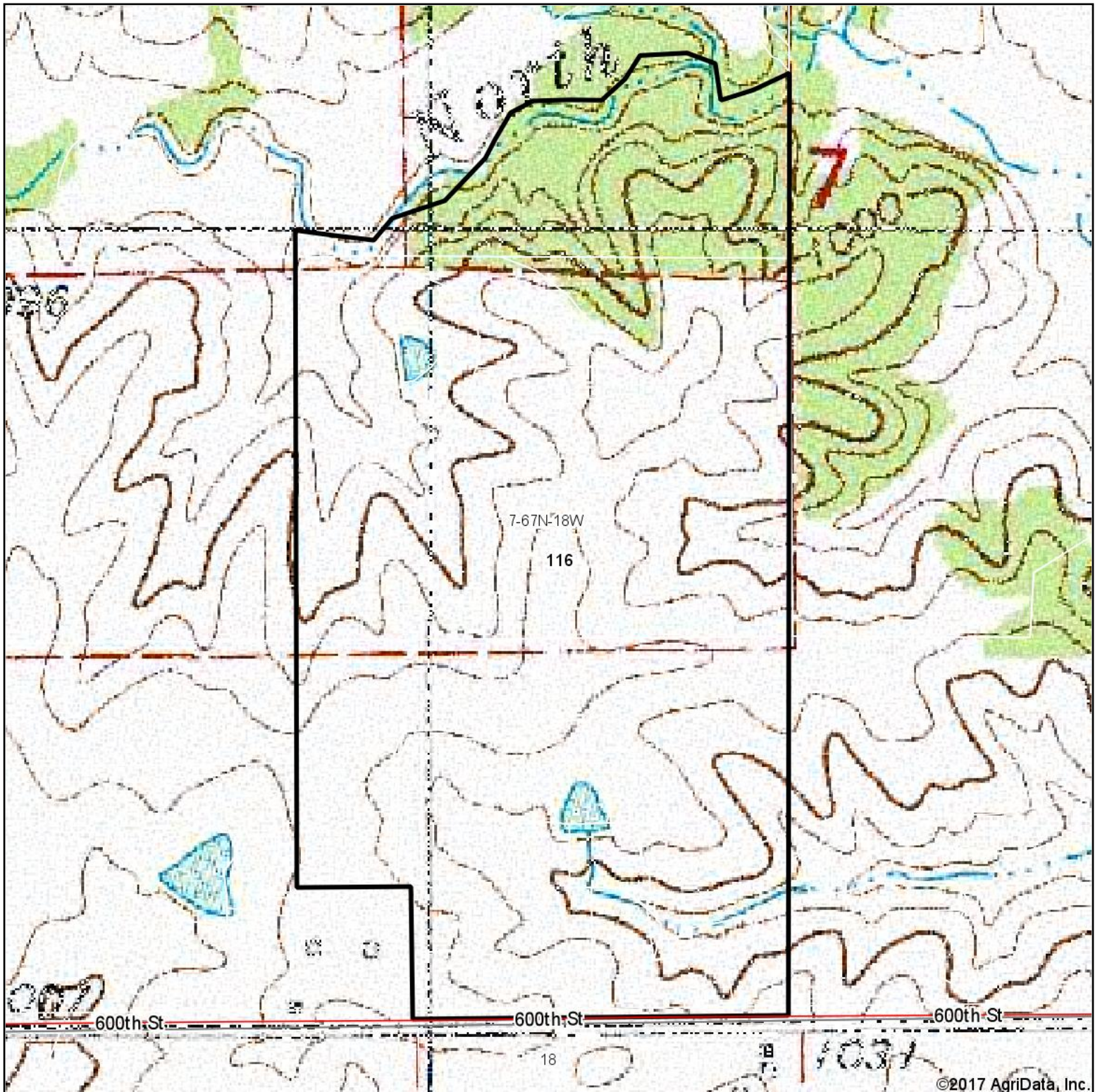
\*\*IA has updated the CSR values for each county to CSR2.

\*c: Using Capabilities Class Dominant Condition Aggregation Method

Soils data provided by USDA and NRCS.



# Topography Map



map center: 40.613638, -92.975066

0ft 538ft 1076ft

**7-67N-18W**  
**Appanoose County**  
**Iowa**



7/24/2017



Maps Provided By:



© AgriData, Inc. 2017

www.AgriDataInc.com