

Weekend Getaway Cabin & Hunting Tract Near Mark Twain & Hunnewell Lake

Trophy Properties and Auction • 855.573.5263 • leads@trophyapa.com



PROPERTY ADDRESS:

4650 Hwy Z
 Emden, MO 63439

PRICE: \$240,000

ACRES: 60

COUNTY: Shelby

PROPERTY DESCRIPTION:

This 60 +/- acre gem is for sale with great hunting and close proximity to public boating/fishing at Mark Twain Lake or Hunnewell Lake. With the 900 sq. foot living quarters built within the metal building, an abundant deer and turkey population, and its proximity to great fishing this is the perfect weekend getaway.

This property is set up to be used year round with spring/summer fishing, fall/winter hunting, storage for your toys, and living quarters. The property has hard woods, cedar thickets, creeks, and a pond to hold large amounts of wildlife on this 60 +/- acre property.

PROPERTY HIGHLIGHTS:

- 60 +/- acres of great hunting
- 900 Sq. ft. living space (2 bed/1bath) inside metal building
- 30x55 metal storage building with drive through
- Stocked fishing pond (albino catfish)
- Established trails
- Blacktop road frontage
- 4 miles north of great public fishing at Hunnewell Lake & 15 miles from Mark Twain Lake
- 1/2 hour from Quincy, IL/Hannibal, MO



PRESENTED BY:

JASON CLEVELAND

Broker/Partner

M: 636.751.479

P: 855.573.5263 x701

jcleland@trophyapa.com

Trophy Properties and Auction

15480 Clayton Road

Suite 101

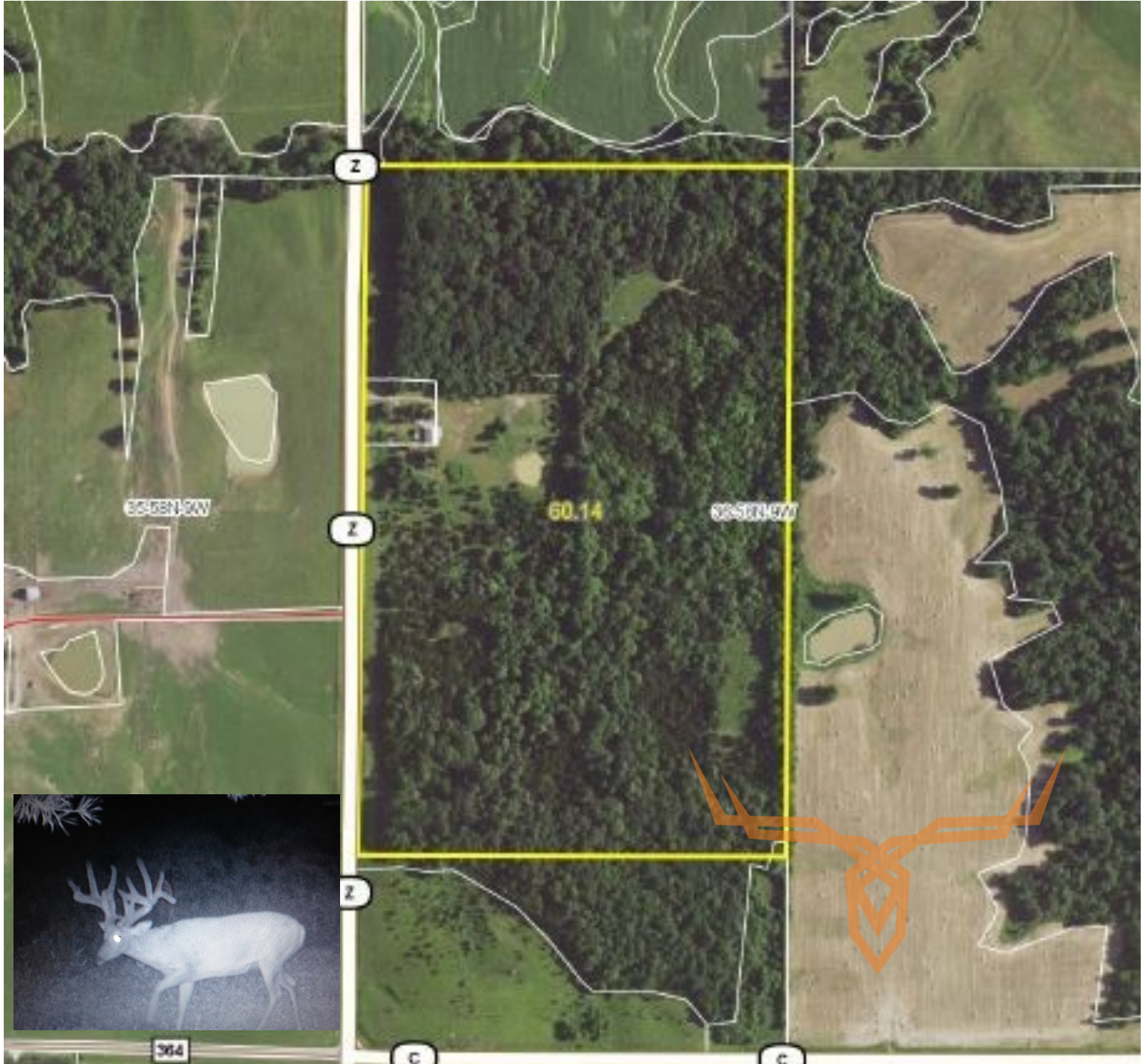
Ballwin, MO 63011

www.Trophyapa.com

leads@trophyapa.com

Weekend Getaway Cabin & Hunting Tract Near Mark Twain & Hunnewell Lake

Trophy Properties and Auction • 855.573.5263 • leads@trophypa.com



TAXES: \$554

TAX YEAR: 2016

TILLABLE: 0 Acres

TIMBERED: 56 Acres

PASTURED: 4 Acres